

**ASSOCIATION
OF ZOOS &
AQUARIUMS**

**2006
Conservation Impact Report**



conservation impact report

Zoos and aquariums accredited by the Association of Zoos and Aquariums (AZA) are much more than places to see animals – they are leaders in conservation. In the last five years, AZA-accredited zoos and aquariums funded 3,693 conservation projects in more than 100 countries. Annual spending on conservation averages nearly \$70 million per year.

From endangered species breeding to field conservation to educational programs, zoos and aquariums help maintain our planet's diverse wildlife and natural habitats while engaging the American public to appreciate and participate in conservation. In this annual report, you will find a summary of the 2006 collective conservation efforts of AZA-accredited zoos and aquariums, as well as a complete list of individual projects broken out by state and by zoological institution.





2006 annual summary

Total number of projects reported 1,807

New	824
Continued	983

Publications

AZA experts publish their findings each year to share their wealth of knowledge with their colleagues and the rest of the scientific community. In 2006, AZA zoo and aquarium professionals produced a total of 787 publications.

book chapters	57
books	20
conferences/ meetings	270
journal articles	333
posters	94
thesis/ dissertations	13

Information about the 2006 Conservation Impact Report

In 2006, AZA had 216 accredited institutions and certified-related facilities. 194 AZA members contributed data to this report. Not all institutions report the amount of money spent on their projects or contributions. Thus, the total expenses reported to AZA are likely to only reflect a subset of the entire impact AZA zoos and aquariums had on conservation that year.

The conservation reports in this impact report may be viewed in full at the AZA website:

<http://members.aza.org/departments/ConScienceMO/ARCS/>

ALABAMA

Birmingham Zoo

Aruba Island rattlesnake field research. *Aruba*

CBSG/ WAZA Amphibian Initiative

Conservation Endowment Fund - Contributions

Elephant Manager's Association Sponsor

Feline coronavirus: Epidemiology, pathogenesis, diagnosis, and immunity in non-domestic felids

International Conservation and Research Symposium

Mahouts and their elephants working as conservation response units in *Sumatra*

Partnership with the Wildlife Center at Oak Mountain

Rodrigues fruit bat conservation project. *Rodrigues Island*

Urban Forestry and Conservation Fair

Venomous Snake Workshop

Montgomery Zoo

Behavioral responses of captive squirrel monkeys

Feline coronavirus: epidemiology, pathogenesis, diagnosis, and immunity in non-domestic felids

ARIZONA

Arizona-Sonora Desert Museum

Ajo Peak to Tinajas Altas: Flora of Southwestern Arizona

ASDM Digital Library Project

Bat Species Diversity at the Chiricahua National Monument and Ft. Bowie National Historic Site in AZ

Biodiversity of Sonora, *Mexico*

Captive breeding of the Tarahumara frog. *Mexico, United States*

Captive husbandry & educational display of the California floater, a freshwater mussel endemic to the southwest, at the Arizona-Sonora Desert Museum

Conservation of Arizona Upland Sonoran Desert Habitat. status and threats of Buffelgrass in Arizona and Sonora. *Mexico, United States*

Continuing study of a feral population of spiny-tailed iguanas on the Desert Museum grounds

Deciphering Rattlesnake Behavior: Do Snakes Habituate to Human Contact? A Telemetric Study of Rattlesnakes at the Arizona-Sonora Desert Museum

Digital image inventory of the Amphibians and reptiles of the Yécora, Sonora, *Mexico*

Extreme local biodiversity of succulent plants in central Baja California

Flora and Environmental Education in the Sierra de Mazatán, Sonora. *Mexico*

Flora of the Municipio de Yécora, eastern Sonora, Mexico: Grasses and Legumes. *Mexico*

Habitat use by the endangered lesser long-nosed bat along military routes in Southern Arizona

Invaders of the Sonoran Desert Region

Lesser long-nosed bat movements and foraging in central-eastern Arizona

Lesser long-nosed bat study in the Ironwood Forest National Monument for 2001-2003 for the Bureau of Land Management

Local Floras of Sonora: Tónichi and La Calera. *Mexico*

Mexican Wolf Reintroduction Project

MIRP (Impact of a visit to a zoo or aquarium)

Rattlesnake translocation at the Arizona-Sonora Desert Museum

Sonoran Tropical Dry Forest Conservation Initiative. *Mexico*

Surveys of *Coryphantha robbinsorum* and other rare plants in northern Sonora and adjacent Chihuahua. *Mexico*

Surveys of *Dalea tentaculoides* and other rare plants in Northern *Mexico*

Understanding the fall migration of the endangered lesser long-nosed bat: an extension of the Arizona-Sonora Desert Museum's Migratory Pollinator Project

Use of bat houses in Southeastern Arizona

Weeds Across Borders 2006 Conference

Wolf Awareness - Timber Wolf Alliance

Phoenix Zoo

Behavioral responses of captive squirrel monkeys

Borderlands Jaguar Detection Project

Recovery of the endangered black-footed ferret

Seafood Watch

Reid Park Zoo

Butterfly Conservation Initiative

Community conservation of Grevy's zebra in northern *Kenya*

International Tapir Symposium. *Argentina, South America*

Mass vaccination of Grevy's zebra against anthrax in northern *Kenya*

Northern Rangelands Trust. *Kenya*

Securing critical rangeland for Grevy's zebra in northern *Kenya*

ARKANSAS

Little Rock Zoo

Analysis of reproductive hormones in mongoose lemurs

Appalachian Bear Center

Arkansas statewide raptor awareness community projects

Bushmeat Crisis Task Force (BCTF). *Africa*

Cheetah Conservation Fund. *Namibia, Kenya, South Africa*

Chimp Haven

Chimp-n-Sea Wildlife Conservation Fund - Kibale Community Fuel Wood Project. *Uganda*

Conservation Endowment Fund - contributions

El Valle Amphibian Conservation Center. *Panama*

Financial support of the Conservation Breeding Specialist Group (CBSG)

Heifer International

Little Rock Zoo and Mount Holly Cemetery's bat and bird box partnership

Maned wolf educational posters

Mbeli Bai Gorilla Study. *Congo*

Mexican Wolf Reintroduction Project

Ngamba Island Chimpanzee Sanctuary. *Uganda*

Phase I of the Elephant Survival Center

Riddle's Elephant Sanctuary - AAZK

Saving Sun Bears Project - Defenders of Wildlife. *Asia*
Sex differences in testosterone concentration across primate taxa

Siberut Conservation Project. *Indonesia*

2006 conservation projects

SOS Rhino's Borneo Project.
Borneo

Turtle Survival Alliance.
Worldwide

Zoo Conservation Outreach
Group

CALIFORNIA

Aquarium of the Bay

Seafood Watch

Jelly cultures

Seafood Watch

Tagging of Pacific Pelagics

Birch Aquarium at Scripps Institute of Oceanography

Early Childhood Classes- A, B,
Sea Club

Family Days

Family/Children Field
Exploration Programs

Geology Program

Grunion Greeter Research
Project

Jelly cultures

National Ocean Science Bowl

Sarcastic fringehead behavior

School Programs

Seahorse propagation

Summer Learning Adventures
Camp

Whale watching

Wyland Ocean Challenge
Curriculum & Workshops

Cabrillo Marine Aquarium

Biannual survey of benthic
invertebrates and fish at a
manmade salt marsh in Los
Angeles County, California

Cabrillo Marine Aquarium's
Royal Caribbean Sea Ranger
Program

Cryogenic preservation of
grunion sperm and eggs

Cryogenic preservation of red
abalone gametes
Culturing of three microalgae
species

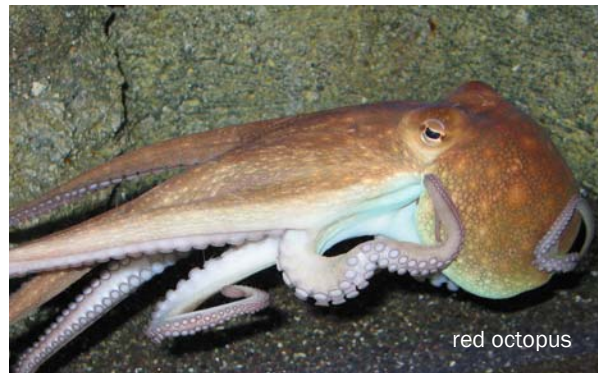
Culturing rotifers in different
temperatures and ammonia
levels

DNA sequencing and
identification of
development genes in moon
jelly planulae

Effect of low oxygen
environment on strength of
mussel byssal threads

Effect of temperature on
growth of moon jelly
medusae

Feeding behaviors and
preferences of the red
octopus



Grunion Greeters

Husbandry and conservation of
white abalone

Jelly cultures

Long-term monitoring of
intertidal invertebrates on
the Palos Verdes Peninsula,
Los Angeles County,
California

Long-term population surveys
of selected intertidal biota
at the Point Fermin Marine
Life Refuge, Los Angeles
County, CA

Mechanics of sea jelly
movement

Metabolic muscle biochemistry
in juvenile white sea bass

Monitoring of water quality and
related environmental
parameters of seashore
habitats at Cabrillo Beach,
Los Angeles County, CA

Pacific sea horse husbandry
and development

Parasitology and genetic
analysis of invasive ghost
shrimp in a salt marsh.
Paraguay, Argentina, Bolivia

Portals to the Sea

Raising blue-banded goby
embryos to adulthood

Raising California spiny lobster

Raising garibaldi from eggs

Raising grunion embryos to
adulthood

Raising purple-striped, lion's
mane and black jellies

Raising red rock shrimp from
egg to adulthood

Sea Ranger Pier Education on
fish contamination and fish
surveys

Sea Ranger tidepool education

Seafood Watch

Weekly bird survey at
manmade salt marsh at
Cabrillo Beach, Los Angeles
County, CA

Charles Paddock Zoo
Island Fox Conservation and
Captive Breeding Program

Meerkat Nutrition Study

Coyote Point Museum

Island Fox Conservation and
Captive Breeding Program

Fresno Chaffee Zoo

Butterfly Conservation Initiative

Conservation Endowment Fund

Happy Hollow Zoo

Advance Force via Wildlife
Direct

Belize Audobon Society. *Belize*

Bushmeat Crisis Task Force
(BCTF). *Africa*

Return the Call of the Wild Cell
Phone Recycle Program

Seafood Watch

Have Trunk Will Travel, Inc.

Development of Sex Selection
Protocols for African and
Asian Elephant Sperm

International Elephant
Foundation. *Africa, Asia*

Living Desert

Basal reproductive biology of
the sand cat and black-
footed cat

Bowling for Rhinos - American
Association of Zoo Keepers
(AAZK)

Butterfly Conservation Initiative

Community Conservation of
Grevy's zebra in northern
Kenya

Conservation of Sahelo-
Saharan antelope. *Niger*

Desert Pupfish *ex situ* refugia
management

Desert Tortoise Adoption
Program

2006 conservation projects

Dynamics of captive pack formation in the African wild dog	Drill Rehabilitation and Breeding Center. <i>Nigeria</i>	Human Elephant Conflict in <i>Cambodia</i>	Okapi Conservation Project. <i>Congo</i>
Effectiveness of scat dog detection program for monitoring abundance, distribution and physiological health of fishers in northern coast range of California	Ecology of <i>Varanus olivaceus</i> on Polillo Island and implications for other giant frugivorous lizards in Philippines. <i>Philippines</i>	Indian Rhino Conservation. <i>Nepal</i>	Onset of puberty in the Sumatran rhinoceros
Endangered Channel Island fox recovery planning	Effect of a browse ball on behavior of female Grevy zebras	International Project for the Conservation of Mountain Tapirs. <i>Colombia</i>	Peninsular Pronghorn Recovery Project
Endangered southwestern gray wolf distinct population segment recovery planning	Effect of elevated perches and location of enrichment on time captive orangutans spend off the ground	International Tapir Symposium. <i>Argentina, South America</i>	Philippine Spotted Deer Conservation Project. <i>Philippines</i>
Mecca aster propagation and habitat restoration project	Financial support - International Rhino Foundation. <i>Asia, Africa</i>	Island Fox Conservation and Captive Breeding Program	Prevention and treatment of chlamydia and cryptococcosis in koalas. <i>Australia</i>
Northern Rangelands Trust. <i>Kenya</i>	Finding and providing appropriate conditions under which to hold the endangered mountain yellow-legged frog	Limbe Wildlife Center. <i>Cameroon</i>	Protection of the Sumatran rhino. <i>Indonesia</i>
Peninsular Pronghorn Recovery Project	Genetic relationship between the two populations of Indian rhinos in Assam (India) and Nepal. <i>India, Nepal</i>	Madagascar Fauna Group. <i>Madagascar</i>	Reintroduction of the California Red-legged frog
Sahara Conservation Fund. <i>Algeria, Chad, Niger, Ethiopia, Senegal</i>	Geographic distribution and conservation of the Crested Capuchin. <i>Brazil</i>	Mass vaccination of Grevy's zebra against anthrax in northern <i>Kenya</i>	Rio Primate Center. <i>Brazil</i>
Securing Critical Rangeland for Grevy's zebra in northern <i>Kenya</i>	Greater access to direct sun increases time spent by maned wolves on exhibit	Minimizing the conflict between Asian elephants and local villagers. <i>Sri Lanka</i>	Scotia Endangered Mammal Recovery Project
Spinal morphology and functional biomechanics of selected canids	Grevy's Zebra Keeper Earthwatch Expedition Program	Mountain bongo repatriation to Mount Kenya World Heritage Site. <i>Kenya</i>	Securing critical rangeland for Grevy's zebra in northern <i>Kenya</i>
Wing and tail morphology and mechanisms of sound production in Costa's and black-chinned Hummingbirds		Movement and survivability in a population of California red-legged frogs	Social organization, reproductive patterns/protocols of endemic captive Mexican herpetofauna
		Northern Rangelands Trust. <i>Kenya</i>	Sonoran Pronghorn Recovery Project. <i>Mexico</i>
		Observational study documenting the effects of introducing chimpanzee youngsters into an established group	Status assessment of wildlife in the Ogaden Region of <i>Ethiopia</i>
			Status of Red Uakari in Yavari Valley, <i>Peru</i>

Los Angeles Zoo and Botanical Gardens

"Team Stream"

Activities of snow leopards housed at the Los Angeles Zoo

Activity budget and effects of scent on lion behavior

Behavioral enrichment for a solitary male Asian elephant

California Condor Recovery Project: rear and prepare for release to the wild

Compatibility of bongo and red river hogs

Drill conservation on the Island of Bioko. *Equatorial Guinea*



red river hog

Time spent in group defense by parents and their fledged offspring in the communally breeding laughing kookaburra

Turtle Survival Alliance. *Worldwide*

UCLA Extension Course "Observing Animals: Behavioral Studies in Zoos"

USDA Plant Rescue: cycad collection transfer for endangered plants

Visayan warty pig conservation program. *Philippines*

Wild orangutan self-medication strategies. *Indonesia*

2006 conservation projects

Monterey Bay Aquarium

Abundance and distribution of acanthocephalid parasites

Archival tagging of Atlantic bluefin tuna

Assessment of basal endocrine and seminal traits in otters

Biannual southern sea otter census

Captive propagation of corals

Center for the future of the oceans

Communication Partnership for Science and the Seas (COMPASS)

Conservation research program administration

Documenting persistent effects of oil in Alaskan sea otters

Effects of pup rearing on foraging effort and behavior of female sea otters along Monterey Peninsula

Environmental preferences of Pacific bluefin tuna

Foraging effort, time ashore and survival of female sea otters rearing pups along the Monterey Peninsula

High-resolution DNA marker panel specific to the southern sea otter

Improve assessment, treatment and care of live-stranded sea otters

Individual variation in maternal care and provisioning in the southern sea otter: causes and consequences of diet specialization in a top predator

Jelly cultures

Laparoscopic diagnostic techniques in sea otters

Laparoscopy in Fish

MIRP (Impact of a visit to a zoo or aquarium)

Pup behavioral development in captivity and in the wild

Sanctuary Integrated Monitoring Network

Schoolyard Habitats

Science Under Sail

Sea otter conservation endocrinology

Sea otter population genetics

Sea otter distribution and abundance along Monterey Peninsula

Seafood Watch

Shorebird and seabird rehabilitation

Southern Sea Otter Salvage Program

Strategies for returning live-stranded sea otters to the wild

Studies of sea otters in the Commander Islands

Subcutaneous transmitter implants

Tagging of pacific pelagics

Tagging of white sharks

TOPP Outreach

Trends in live strandings of southern sea otters and relevance to mortality

White Shark Research Auditorium Program

Zoo and Aquarium Teen Program Assessment Consortium (ZATPAC)

Oakland Zoo

ARCAS - Wildlife Rescue and Conservation Association. *Guatemala*

Assessment of basal endocrine and seminal traits in otters

Behavioral Responses of Captive Squirrel Monkeys

Bushmeat Crisis Task Force (BCTF). *Africa*

Butterfly Conservation Initiative

Conservation Endowment Fund - Contributions

Sahara Conservation Fund. *Algeria, Chad, Niger, Ethiopia, Senegal*

Seafood Watch

Sex differences in testosterone concentration across primate taxa

Tree Kangaroo Conservation Program in Papua New Guinea. *Papua New Guinea*

Sacramento Zoo

Community conservation of Grevy's zebra in northern *Kenya*

Conservation Endowment Fund - contributions

Developmental effects of climate on the lion's mane

International Snow Leopard Trust. *Asia*



snow leopard © dennis connor

Madagascar Fauna Group. *Madagascar*

Mountain bongo repatriation to Mount Kenya World Heritage Site. *Kenya*

Northern Rangelands Trust. *Kenya*

Securing critical rangeland for Grevy's zebra in northern *Kenya*

San Diego Wild Animal Park

Butterfly Conservation Initiative

California and Andean Condor Project

California Condor Recovery Project: rear and prepare for release to the wild

Feline coronavirus: Epidemiology, pathogenesis, diagnosis, and immunity in non-domestic felids

Growth of Okapi

Mountain bongo repatriation to Mount Kenya World Heritage Site. *Kenya*

Swaziland Elephant/ Rhino Conservation. *Africa, United States*

Zoological management of rhinos and tapirs in captivity

San Diego Zoo

Assessment of basal endocrine and seminal traits in otters

Assisted reproduction using sex-sorted sperm: a management strategy for captive gorillas

California and Andean Condor Project

Coastal sage scrub biodiversity monitoring at the San Diego Zoo's Wild Animal Park

2006 conservation projects

Community conservation of Grevy's zebra in northern Kenya	Komodo Dragon SSP Conservation Fund. <i>Indonesia</i>	Securing Critical Rangeland for Grevy's zebra in Northern Kenya	Sperm cryopreservation for IVF and embryo transfer in the fishing cat
Conservation education in pastoral communities: educating teachers to enhance local understanding of human-wildlife interactions. Kenya	Madagascar Fauna Group. <i>Madagascar</i>	Status assessment of wildlife in the Ogaden Region of Ethiopia. <i>Ethiopia</i>	Using oral progestogen to improve ovarian response for artificial insemination in the fishing cat
Development of assisted reproductive technology in black bears	Mass vaccination of Grevy's zebra against anthrax in northern Kenya	Tree Kangaroo Conservation Program in Papua New Guinea. <i>Papua New Guinea</i>	Zoo and Aquarium Teen Program Assessment Consortium (ZATPAC)
Development of gamete cryopreservation technology	Molecular epidemiology and characterization of Helicobacter species in captive wildlife	Visayan warty pig conservation program. <i>Philippines</i>	
El Valle Amphibian Conservation Center. <i>Panama</i>	Molecular epidemiology of avian mycobacteriosis	San Francisco Zoological Park Analysis of gamma-delta T-cell populations in ruminant and non-ruminant animals	Santa Ana Zoo AZA CEF
Estrous cycle monitoring and artificial insemination in giant pandas	Molecular epidemiology of gamma herpesviruses in captive hoofstock	Assisted reproduction using sex-sorted Sperm: A management strategy for captive gorillas	Brazilian Ocelot Consortium. <i>Brazil, United States</i>
Estrous cycle monitoring and artificial insemination in sun bears	Molt patterns in captive Kori bustards	Augur buzzard phylogenetic analysis	International Tapir Symposium. <i>Argentina, South America</i>
Friends of the Australian Koala Foundation. <i>Australia</i>	Mountain bongo repatriation to Mount Kenya World Heritage Site. <i>Kenya</i>	Bald Eagle Program	Santa Barbara Zoological Gardens
Genetic relationship between the two populations of Indian rhinos in Assam (India) and Nepal. <i>India, Nepal</i>	Natural History and Reintroduction of the Aneгада Iguana. <i>British Virgin Islands</i>	Central American Regional Collection Plan for the Bairds' tapir	Amazon Conservation Team. <i>Brazil, Bolivia, Peru, Ecuador, Colombia, Venezuela, Guyana, Suriname</i>
Great Lake Piping Plover Salvage Captive Rearing	Northern Rangelands Trust. <i>Kenya</i>	Comparative genetic analysis across vertebrate genomes	Butterfly Conservation Initiative
Grevy's zebra Keeper Earthwatch Expedition Program	Peninsular Pronghorn Recovery Project	Comparison of the feeding behavior of four ring-tailed lemur troops in Berenty following removal of all leucocarpa trees from the range of two of the four troops. <i>Madagascar</i>	California Condor Recovery Project: rear and prepare for release to the wild
Guatemala beaded lizard conservation program. <i>Guatemala</i>	Reproductive assessment and sperm banking of wild black-footed cats in <i>South Africa</i>	International Snow Leopard Trust. <i>Asia</i>	Endangered Channel Island Fox Recovery Planning
Identification of spiral-shaped bacteria associated with intestinal disease of captive nonhuman primates	Reproductive behavior of captive adult giant pandas	International Tapir Symposium. <i>Argentina, South America</i>	Humboldt Penguin Conservation - <i>Peru</i>
Integrated Primate Biomaterials Resource (IPBIR)	Reproductive biology of captive kiwis	Laikipia Predator Project. <i>Kenya</i>	International Elephant Foundation. <i>Africa, Asia</i>
International Iguana Foundation. <i>Dominican Republic, St. Lucia, Jamaica, Grand Cayman</i>	Reproductive parameters of free-ranging and captive snakes	Lake Merced Restoration and Conservation	Island Fox Conservation and Captive Breeding Program
International Snow Leopard Trust. <i>Asia</i>	Risk factors for avian mycobacteriosis	Madagascar Fauna Group. <i>Madagascar</i>	Lake Victoria Cichlid SSP (VSSP)
International Tapir Symposium. <i>Argentina, South America</i>	Risk of maternal-neonatal transmission of Johne's disease in captive exotic hoofstock	San Francisco Garter Snake Project	Los Padres National Forest Herp Project
Koala Conservation Project. <i>Australia</i>	Role of diseases in the decline of the endangered Wyoming toad	San Francisco Zoo DNA Bank	Meerkat Nutrition Study
	Sahara Conservation Fund. <i>Algeria, Chad, Niger, Ethiopia, Senegal</i>	Seafood Watch	Multi-institutional study of bachelor gorilla groups
			Wild Research
			Zoo Conservation Outreach Group (ZCOG)

SeaWorld San Diego

Cetacean stranding program

Characterization of Nutritional Status in Feeding Gray Whales

Cruising with a Conscience: reducing the illegal wildlife trade impact of North American cruise ship tourism

Development of Philippine National Marine Mammal Stranding Network. *Philippines*

Habitat Heroes: The Return of the Natives

Hubbs-Sea World Research Institute

Killer whale growth and development

Marine bird rescue and rehabilitation program

Marine mammal genetics

Marine mammal immunology

Marine mammal reproductive biology

Marine turtle stranding program

Mayumba National Marine Park Outreach Program. *Mayumba*

Nature for Kids in Tanzania. *Tanzania*

Pinniped rescue and rehabilitation

Providing a water supply network in Phnom Tamao Wildlife Rescue Center (PTWRC), *Cambodia*

Reducing the impact of the crane trade in Africa: Assessment and amelioration. *Kenya, Uganda, Tanzania, South Africa*

Sea otter conservation endocrinology

Sea Turtle Conservation Awareness Partnership (STCAP)

Shark Fishers' Conservation Network (Pescadores Y Tiburones). *Mexico*

Training programme on methods of surveying and monitoring otterPopulations and their wetland habitats

What really stinks for seabirds? Exploiting sensory ecology to reduce seabird bycatch. *Australia*

Sequoia Park Zoo

Chilean Flamingo Conservation Program. *Argentina*

Six Flags Discovery Kingdom

Determining baseline blood values including thyroid hormonal values in healthy captive Pacific Walrus

Elephant LH research

Orca vaginal cytology

Voriconazole Pharmacokinetics in Dolphins

COLORADO

Cheyenne Mountain Zoo

Butterfly Conservation Initiative

Epulu Okapi Project

International Elephant Foundation. *Africa, Asia*

International Tapir Symposium. *Argentina, South America*

Kori Bustard Feather Project

Mexican Wolf Reintroduction Project

Mountain tapir ecology in *Colombia*

Recovery of the endangered black-footed ferret

Seafood Watch

Ugandan Guinea Fowl Project. *Uganda*

ZCOG

Denver Zoological Gardens

Andean bear habitat use and conservation. *Peru, Bolivia*

Asian elephants GPS movement study. *Malaysia*

Assessing landscape connectivity for carnivores through genetic patterns in Nevada's bobcat population

Assessing reproductive parameters in captive kori bustards using non-invasive fecal hormone analysis

BAMZ/BZS research grants and support

Behavioral ecology and conservation of the grey-shanked douc monkey in the central highlands of *Vietnam*

Biomedical survey of prosimian primates in *Madagascar*

Black bear ecology, conservation, and management in the state of *Sonora, Mexico*

Breeding success of cinereous vultures in Ikh Nart, *Mongolia*

Brown hyaena ecology and conservation. *South Africa, Botswana, Namibia*

Chemical communication and behavioral ecology of African wild dogs. *Botswana*

Colorado carnivore complex baseline study

Conducting shortgrass prairie conservation and planning for future network of connected reserves and lands managed for conservation values in the southern Great Plains

Conflicts between Grevy's zebras and African lions in *Kenya*

Conservation and ecology of Mongolian saiga. *Mongolia*

Conservation of big game migration corridors in the Greater Yellowstone ecosystem

Conservation of Huemul deer in Chilean Patagonia. *Chile*

Developing a citizen science wildlife monitoring program for wildlife crossings in *Colorado*

Developing a model for local management of protected areas in *Mongolia*: Ikh Nart Nature Reserve as a case study. *Mongolia*

Developing assisted reproductive technologies for cinereous vultures

Ecology and conservation of African wild dogs in *Kenya*

Ecology and conservation of argali sheep. *Mongolia*

Ecology and dynamics of an urban complex of prairie dog colonies in Denver metro area

Ecology and movement patterns of prairie rattlesnakes in eastern *Colorado*

Ecology and resource partitioning of jaguars and pumas in the dry tropical forests of *Jalisco, Mexico*

Ecology of cinereous vulture. *Mongolia*

Effects of habitat degradation and climate change in the long-term survival of the volcano rabbit

Effects of habitat disturbance and fragmentation on Asian elephants in northern *Sumatra*

El Valle Amphibian Conservation Center. *Panama*

Elephant surveys and training in Taman Negara National Park, *Malaysia*

Establishment of a biosphere reserve as a model of biodiversity conservation in *Uzbekistan*

Exploring challenges and opportunities in carnivore conservation in the northern *Rockies*

2006 conservation projects

Function of allogrooming in black-tailed prairie dogs	Population size, genetics, and spatial distribution of the Janos bison	Pueblo Zoo Canada lynx endocrinology project	Investigating Immune Systems in Aquatic Animals
Great Lake Piping Plover Salvage Captive Rearing	Project Golden Frog/ Proyecto Rana Dorada. <i>Panama, United States, Costa Rica</i>	Rainforest meter. <i>South America</i>	Investigating the behavior and acoustics (communication) of the Indo-Pacific bottlenose dolphins around Mikura Island, <i>Japan</i>
Great Lakes piping plover project in northern Michigan	Puerto Rican Crested Toad Reintroduction and Recovery Efforts. <i>Puerto Rico</i>	Teaching Environmental Science Naturally	Investigation of neural immune profiling, transcriptomics and proteomics as clinical tools in assessing navy dolphin health
Humboldt Penguin Ecology and Health Research Initiative in <i>Chile</i>	Range and movement of translocated Asian elephants in Peninsular <i>Malaysia</i>	CONNECTICUT	
Influence of prairie dog presence on the bird diversity of urban habitat fragments in the Denver Metro Area	Reproductive senescence in the Pallas' cat	Connecticut's Beardsley Zoo Butterfly Conservation Initiative	Marine Mammals Ashore: A Field Guide to Strandings, 2nd Edition
International Tapir Symposium. <i>Argentina, South America</i>	Resource partitioning among argali sheep and Siberian ibex in Dornogobi Aimag, <i>Mongolia</i>	Conservation Endowment Fund - contributions	Monitoring beluga whale health and body condition consuming different percentages of Mazuri artificial fish diet.
Internship program for Native American students	Saiga population dynamics and conservation in Kalmykia, <i>Russia</i>	International Tapir Symposium. <i>Argentina, South America</i>	Monitoring hematology, plasma chemistry, immunology, stress and molt hormones throughout the molting period in penguins
Komodo dragons of Gili Montang. <i>Indonesia</i>	Seafood Watch	IUCN/SSC Tapir Specialist Group	Object representation in echolocating beluga whales
Lake Victoria Cichlid SSP (VSSP)	Securing Critical Rangeland for Grevy's zebra in Northern <i>Kenya</i>	New England Zoo and Aquarium Conservation Collaborative	Rescue and rehabilitation of stranded marine mammals and sea turtles along the Connecticut and Rhode Island shorelines
Landscape use and movements of frugivorous and insectivorous birds in tropical dry forest of western <i>Mexico</i>	Siberian tiger conservation project - veterinary training program. <i>Russia</i>	Understanding the role of physiology in reintroduction success: Stress and reproduction in reintroduced Canada lynx	
Long-term study of blue sheep biology and long-term alpine grassland ecosystem research base	Small carnivore survey in the Ikh Nartiin Chuluun Nature Reserve, <i>Mongolia</i>	Mystic Aquarium & Institute for Exploration Cape Cod Stranding Network	
Madagascar Fauna Group. <i>Madagascar</i>	Some ecological and biological issues of the Mongolian lark in <i>Mongolia</i>	Comparing the behavior and signal exchange between dolphins in the wild with those in human care. <i>Japan, Honduras</i>	
Malagasy Fish Conservation. <i>Madagascar</i>	Sumatran tiger habitat and landscape use	Eavesdropping on dolphins	
Margarita Island capuchin monkey conservation	Toads at the edge: tracking a disappearing species in the rapidly changing landscapes of southeast Alaska	Health and risk assessment of bottlenose dolphin populations in Charleston, SC	
Mass Vaccination of Grevy's zebra Against Anthrax in Northern Kenya	Tracking Asian elephant movements in trans-boundary <i>Thailand</i> and <i>Myanmar</i>	Identification, group dynamics, population parameters, distribution, association, communication and signal exchange among the Atlantic spotted dolphin	
Northern Rangelands Trust. <i>Kenya</i>	TRACKS development	Impact of marine origin Brucella on marine mammal and human health	
Okavanga Botswana Wild Dog Research Project. <i>Botswana</i>	Watershed conservation in tropical <i>Ecuador</i>		
Participation in the 104th Annual Christmas Bird Count	Wildlife and forest conservation in <i>Bhutan</i>		
Philopatry and dispersal of Humboldt penguins from a breeding colony in <i>Chile</i>			



DELAWARE

Brandywine Zoo

Butterfly Conservation Initiative

Mid-Atlantic Conservation Alliance

MIRP (Impact of a visit to a zoo or aquarium)

DISTRICT OF COLUMBIA

Smithsonian National Zoological Park

African elephant acyclicity study

Amazon-GIS Program . *Brazil, Bolivia, Peru, Ecuador, Colombia, Venezuela, Guyana, Suriname*

Amazonia Science Gallery

Ancient DNA analysis of sub-fossil bones

Asian black bear conservation. *China*

Assessing reproductive parameters in captive kori bustards using non-invasive fecal hormone analysis

Assessing socio-environmental factors in black rhino mortality and reproduction

Atlas of wood-warblers breeding in Turkey Run and Great Falls Parks

Behavior of Island Foxes

Behavioral ecology and reproduction in the social meerkats of the Kalahari. *South Africa*

Behavioral endocrinology, ecology and conservation of the rare gelada baboon in the Menz Highlands, *Ethiopia*

Behavioral study of kori bustards at the National Zoological Park

Biocomplexity of avian malaria, mosquito vectors and avian hosts in Hawaii

Biomedical survey of wild black-footed ferrets

Bowerbird systematics, opsin gene evolution and Mhc variation

Characterization of elephant seminal trials

Characterizing elephant milk constituents

Characterizing the endocrine disrupting effects of oil spills in amphibians in Galon

Citizen science mapping of natural resources

Community Science Workshop

Comparison of Asian elephant milk components with calf growth weights, weaning schedules and maternal reproductive status

Conservation Biology and Ecology of Elephants

Conservation of maned wolf in Brazilian Cerrado. *Brazil*

Conservation of Sahelo-Saharan Antelope. *Niger*

Conservation of the maned Wolf in the Brazilian Cerrado: Ecological, Behavioral, Epidemiological, and Reproductive Aspects. *Brazil*

Conserving endangered African wild dogs outside formally protected areas. *Africa*



Cryopreservation of elephant spermatozoa

Cryptobranchid Interest Group

Decline of the Rusty Blackbird

Demography of the Kentucky Warbler at the CRC

Determination of oocyte activity in aging female cheetah.

Determining the causes of the skin disease, superficial necrolytic dermatitis, in black rhino

Developing a multidisciplinary Smithsonian research program to understand and mitigate amphibian global declines

Developing clouded leopard and fishing cat breeding programs in *Thailand*

Developing field hormone kits for studying reproduction and welfare of free-ranging elephants. *Africa, Asia*

Developing Non-Invasive Field Monitoring Techniques for Clouded Leopards in *Thailand*

Developing noninvasive steroid hormone monitoring methods for tapirs

Development of *in vitro* fertilization for Eld's deer

Development of RT-PCR methods for detection of avian influenza.

Development of safer anesthetic techniques for species with past problems associated with anesthetic episodes

Disease, genetic bottlenecks and the evolution of immune response in island avifauna

Ecology and health status of maned wolves living in Brazilian and Bolivian National Parks. *Brazil, Bolivia*

Effectiveness of conservation zones within tropical planted forests

Effects of carrying capacity on migratory bird populations during different stages of the life cycle

Effects of climate and biotic factors on abundance, demography, and behavior of forest birds

Eld's Deer Conservation. *Myanmar, Thailand, Cambodia, Laos*

Elephant Endothelial Herpes Virus study and testing

Embryo transfer for enhancing conservation of Eld's Deer

Endocrinology of reproduction and stress in the giant panda.

Estimating deer densities

Estrous cycle monitoring and artificial insemination in giant pandas

Evaluating stress in elephants

Examining the relationship between fecal corticoids as a measure of stress and metabolic derangement on the onset of superficial necrolytic dermatitis in captive black rhinos

Feline coronavirus: Epidemiology, pathogenesis, diagnosis, and immunity in nondomestic felids

Fishing and rusty-spotted cat conservation ecology in *Sri Lanka*

Fitness consequences of haemoproteus in great frigate birds on Isla Genovesa, *Galapagos Islands*

Genetic defense against disease, & kinship and social behavior in captive and wild elephants

Genetic relationship between the two populations of Indian rhinos in Assam (India) and Nepal. *India, Nepal*

Genetic Variability of the Maned Wolf. *Argentina, Bolivia, Brazil*

Genetics of Avian Malaria

2006 conservation projects

Giant panda anthelmintic study at Chengdu Research Base. <i>China</i>	Male giant panda reproduction: helping to breed through artificial insemination with frozen sperm	Sahara Conservation Fund. <i>Algeria, Chad, Niger, Ethiopia, Senegal</i>	Understanding adrenal function in elephants
Golden lion tamarin behavioral research	Maned wolf conservation	Salt marsh sparrow ecology and conservation	Understanding reproductive and social behavior and endocrinology of single sex groupings in the Asian small clawed otter
Grevy's zebra Keeper Earthwatch Expedition Program	Molecular Basis of Teratospermia in Felids	SCORE - SEXual CORal REproduction workshop. <i>United States, Puerto Rico, Netherlands</i>	Understanding the basic reproductive biology of lions for management and conservation
Health evaluation of maned wolves in Parque Nacional Noël Kempff Mercado, <i>Bolivia</i>	Molt patterns in captive Kori bustards	SCORE project. <i>United States, Puerto Rico, Netherlands</i>	Understanding the endocrine control of musth in elephant bulls
Health evaluations of free-ranging kori bustards in <i>Kenya</i>	Monitoring elephant reproduction in zoo elephants.	Securing a future for wild sloth bears. <i>India</i>	Understanding the impact of introduced American mink on the native Southern river otter in <i>Chile</i>
Hepatozoon parasites in Giant pandas	Monitoring elephant reproduction to identify puberty and assist breeding in Sri Lankan elephants. <i>Sri Lanka</i>		Using estrous cycle inhibition to improve artificial insemination in the clouded leopard
Impact of environmental variation on trophic interactions	Monitoring reproduction and well being in marine mammals, including killer whales	Sexing of avian embryos via DNA	Using malaria parasites as markers of migratory connectivity
Impact of husbandry practices on reproduction and welfare of Columbia Basic pygmy rabbits	Nutritional constraints on sea otters in the Monterey Bay National Marine Sanctuary	Socio-environmental factors and reproductive activity in elephants	Using oral progestogen to improve ovarian response for artificial insemination in the fishing cat
Increasing reproductive rates in captive Asian and African elephants.	Oocyte cryopreservation in rare biomedical models	Sources of mortality in Bali mynahs	
Influence of age on cheetah oocyte quality and uterine health	Ornithogeography of the southeastern Himalayan region. <i>Myanmar</i>	Sperm cryopreservation for IVF and embryo transfer in the fishing cat	
Interaction of invasive species and white-tailed deer on plant species biodiversity	Pregnancy diagnosis through urine hormone analysis in giraffes	Standardization of assessment techniques for elephant semen cryopreservation	
Investigation into the egg temperature and female incubation behavior in captive kori bustards at the National Zoological Park	Protecting wild clouded leopards, fishing cats, and other carnivores in Thailand National Parks. <i>Thailand</i>	Starling behavioral and endocrine cycles	
Investigation into the egg temperature and incubation behavior in captive American flamingos at the National Zoological Park	Recovery of the endangered black-footed ferret	Strategies for introducing clouded leopards: A pairing comparison study	
Ivory-billed woodpecker DNA barcoding and phylogenetics	Relationship between adrenal activity, nutrition and socio-environmental factors on outbreaks of a debilitating skin disease in captive black rhinos	Study of superficial necrolytic dermatitis (SND) in captive black rhinos.	
Kinetics of feeding in Komodo dragons	Reproduction and reintroduction of arid lands antelope in sub-Saharan <i>Africa</i>	Survey of Predator Mammals Along Appalachian Trail	
Large mammal survey	Reproductive biology of captive kiwis	Takin Ecology and Conservation. <i>China</i>	
Life history and population biology of orange-crowned warbler	Role of birds in disease movement		

FLORIDA

Brevard Zoo

2007 Zoos and Aquariums Committing to Conservation Conference

Community Conservation of Grevy's zebra in northern *Kenya*

Creation of educational materials for Pan-African Sanctuary Alliance. *Africa*

Development of an environmental education suitcase for Drill Ranch

Development of an Environmental Teaching Suitcase for northern Congo (Brazzaville). *Congo*

Educational materials for the Ziwa Rhino Sanctuary. *Uganda*

2006 conservation projects

Financial support - International Rhino Foundation. <i>Asia, Africa</i>	Zoos and Aquariums Committing to Conservation (ZACC)	Limbe Wildlife Centre. <i>Cameroon</i>	Assessing animal visibility as a tool for enhancing guest satisfaction
Florida Butterfly Monitoring Network	Busch Gardens Tampa Bay	Mbeli Bai Gorilla Study. <i>Congo</i>	Assessing male gorilla behavior in indoor and outdoor conditions
Florida Scrub Jay Demography and Dispersal in Restored Landscapes	African wild ass population dynamics, distribution, and status in <i>Eritrea</i>	Monitoring of Orang-utan and other wildlife populations in the Kinabatangan Wildlife Sanctuary. <i>Borneo, Malaysia</i>	Assessing object performance in round hornbills
Goualougo Triangle Chimpanzee Project. <i>Congo</i>	Awareness education to protect safe haven for conservation of chimpanzees and monkeys in <i>Ghana</i>	Mountain bongo repatriation to Mount Kenya World Heritage Site. <i>Kenya</i>	Assessing the effects of large crowds on gorilla behavior
Grevy's zebra Ambassador Program	AWF Tarangire Lion Project. <i>Tanzania</i>	Namunyak Wildlife Conservation Trust, <i>Kenya</i>	Assessment of basal endocrine and seminal traits in otters
Grevy's Zebra Trust	Behavioral approach to resolving human-elephant conflict in the altered landscape of the Anamali Hills, Western Ghats, <i>India</i>	Northern Rangelands Trust. <i>Kenya</i>	Assisted reproduction using sex-sorted sperm: A management strategy for captive gorillas
Hornbill Nest Adoptions in <i>Thailand</i>	Cheetah Conservation Fund. <i>Namibia, Kenya, South Africa</i>	Securing Critical Rangeland for Grevy's zebra in Northern <i>Kenya</i>	Behavior monitoring of the social dynamics of 0.6 Tigers
International Tapir Symposium. <i>Argentina, South America</i>	Community Conservation of Grevy's zebra in Northern <i>Kenya</i>	Wildlife Rehabilitation and Release	Behavioral monitoring of white rhino in <i>Uganda</i>
KEEP (Kakamega Environmental Education Project). <i>Kenya</i>	Community-based education for conservation of the Hainan Gibbon. <i>China</i>	Zimbabwe Black Rhino Project. <i>Zimbabwe</i>	Behavioral response of siamangs and white-cheeked gibbons to crowd size
Mbeli Bai Gorilla Study. <i>Congo</i>	Developing a sustainable tourism plan for the Volcanoes National Park/ <i>Rwanda</i>	Central Florida Zoological Park	Basal reproductive biology of the sand cat and black-footed cat
Monitoring jaguar in the Cockscomb Basin Wildlife Sanctuary. <i>Belize</i>	Early fetal sexing in the rhinoceros	Butterfly Conservation Initiative	Butterfly Conservation Initiative
Monofilament Recovery and Recycling Program	Faunal census of the Maiko National Park and adjacent forests. <i>Congo</i>	Florida Butterfly Monitoring Network	Community conservation of Grevy's zebra in northern <i>Kenya</i>
NESTS: Neighbors Ensuring Sea Turtle Survival	Financial support - International Rhino Foundation. <i>Asia, Africa</i>	Using estrous cycle inhibition to improve artificial insemination in the clouded leopard	Complete blood count and plasma biochemical reference determination in captive pancake tortoises
Northern Rangelands Trust. <i>Kenya</i>	Gorilla Beringei Rehabilitation Project. <i>Rwanda</i>	Disney's Animal Kingdom	Complete blood count, plasma biochemistry, heavy metal and trace mineral reference range determination in adult, male Nile crocodiles
O.W.L.: Our Wildlife Legacy Education Program	Hubbs-Sea World Research Institute	Age-related influences on delayed response memory in gorillas	Computer based delayed-response task in mandrills
Painted dog conservation: children's bush camp program	International Elephant Foundation. <i>Africa, Asia</i>	Aggressive behavior in captive bar-headed geese after initiation of a new training protocol	Conservation of Sahelo-Saharan Antelope. <i>Niger</i>
Red wolf genome resource banking	Kinabatangan Orang-Utan Conservation Project. <i>Malaysia</i>	Analysis of reproductive hormones in mongoose lemurs	Contraceptive Study Using Madzuri ADF-16 Herbivore Pellet with MGA in Hippos
Restoration of oyster reefs in the Indian River Lagoon	Lewa Wildlife Conservancy, <i>Kenya</i>	ARCAS - Wildlife Rescue and Conservation Association. <i>Guatemala</i>	Development of LNG as an effective means of contraception in new world primates
Sea Turtle research and conservation		Aruba Island rattlesnake field research. <i>Aruba</i>	Development of sex selection protocols for African and Asian Elephant Sperm
Securing critical rangeland for Grevy's zebra in northern <i>Kenya</i>			
Support for the University of Central Florida's sea turtle research			
Tree Kangaroo Conservation Program in <i>Papua New Guinea</i>			

2006 conservation projects

Disney's Wildlife Monitoring Program	International Elephant Foundation. <i>Africa, Asia</i>	Peninsular Pronghorn Recovery Project	Social and reproductive behavior of Guam Micronesia kingfishers in captivity
Does increased bird visibility lengthen guest stay time in walk-through aviaries at Disney's Animal Kingdom?	International Iguana Foundation. <i>Dominican Republic, St. Lucia, Jamaica, Grand Cayman</i>	Physiological and behavioral study of three single-sex groups of captive Nile hippos	Social dynamics in a mandrill group
El Valle Amphibian Conservation Center. <i>Panama</i>	International Tapir Symposium. <i>Argentina, South America</i>	Population structure and ranging patterns of Franciscana dolphins in <i>Argentina</i>	Surveillance of short-tailed hawk nest
Elephant communication: examining the relationship between vocalizations, reproductive status and overt behavior in captive female African elephants	Key Largo Woodrat Project	Prognosticators of successful rehabilitated manatee reintroductions	Tagging of post-rehabilitated juvenile green sea turtles utilizing a prototype satellite telemetry device
Establishment of normal health parameters in chelicerates	Key Largo woodrat: Development of an integrated captive propagation	Proposal to study spatial and non-spatial abilities in two species of hornbill	Use of novel nest boxes by carmine bee-eaters in captivity
Evaluation of iron status in black rhinoceros	Knowledge transfer: Does educating children, educate their parents?	Projecto Titi: Conservation of the cotton-top tamarin in <i>Colombia</i>	Wood stork banding/tagging and satellite tracking
Evaluation of PASA education programs	Large carnivore health assessment	Puerto Rican crested toad diet analysis. <i>Puerto Rico, United States</i>	Florida Aquarium, The Assessment of basal endocrine and seminal traits in otters
Evaluation of salmonella shedding in the feces of asymptomatic African elephants	Managing the Dynamic Social Life of Captive Adolescent Male Chimpanzees: A Multi-Institutional Study	Puerto Rican crested toad reintroduction and recovery efforts. <i>Puerto Rico</i>	Conservation Dive Corps Surveys
Financial Support - International Rhino Foundation. <i>Asia, Africa</i>	Mass Vaccination of Grevy's zebra Against Anthrax in northern Kenya	Reproductive parameters in the African elephant	Coral restoration in the Florida Keys using colonies derived from aquacultured fragments
Florida Butterfly Monitoring Network	Minimising the conflict between Asian elephants and local villagers. <i>Sri Lanka</i>	Sahara Conservation Fund. <i>Algeria, Chad, Niger, Ethiopia, Senegal</i>	Fantasy Island: A Cooperative Conservation and Education
General census of orangutan throughout Sabah, <i>Malaysia</i>	Monitoring stress in cheetahs at White Oak Conservation Center	Sea Turtle Index Nest Monitoring Program	Marine Mammal Stranding Network
Goualougo Triangle Chimpanzee Study, Republic of Congo	Monitoring the effectiveness of Depo-Provera(R) injections to mediate aggression between male brown lemurs	Securing critical rangeland for Grevy's zebra in northern <i>Kenya</i>	MIRP (Impact of a visit to a zoo or aquarium)
Great Lake piping plover salvage captive rearing	Multi-institutional study of bachelor gorilla groups	Semen collection and cryopreservation of okapi spermatozoa	North American river otter rehabilitation
Guam Micronesia kingfisher video ethogram	Nest activity by long-tailed broadbills in captivity	Senegal Addax Importation Assistance project	Sandtiger shark spinal studies
Guam rail health assessment - Phase Two: Disease survey of feral galliformes and possible implications for the Guam Rail recovery program/species survival plan. <i>Guam</i>	NESTS: Neighbors Ensuring Sea Turtle Survival	Serologic response to Eastern Equine Encephalitis vaccination in crowned cranes, ostriches, and secretary birds	Sea turtle rehabilitation
Identifying individual differences in cortisol production in elephants (<i>Loxodonta Africana</i> ; <i>Elephas maximus</i>)	Non-chemical control of parasites in ruminants	Serologic survey of response to vaccination in black rhinoceros	Tampa Bay historical wreck survey
	Northern Rangelands Trust. <i>Kenya</i>	Serologic survey of response to vaccination in elephants	Jacksonville Zoological Gardens Ability of a canine to locate Eastern indigo snakes and differentiates them from other reptile species
	Peninsular and Sonoran Pronghorn Recovery Project - Health assessment, disease surveillance, and development of anesthetic techniques, captive husbandry, handling, restraint, and transport techniques	Serum mineral evaluation of exotic ungulates	Assessment of taurine Levels and cardiac function in the giant anteater
			Bat species survey using netting and acoustical techniques in Georgia and Florida's national parks

2006 conservation projects

Carotenoid supplemented insect diet improves plumage coloration in captive northern carmine bee-eaters	Wood stork rookery nest monitoring at the Jacksonville Zoo	Treatment of pedal osteomyelitis and infectious arthritis in African hoofstock: Medical and surgical options, salvage procedures and their sequelae	Prognosticators of successful rehabilitated manatee reintroductions
Crystal River manatee health assessments	Lion Country Safari African elephant acyclicity study	Zoological management of rhinos and tapirs in captivity	Response to conditioned stimuli of two released, rehabilitated West Indian manatee
Detection of fetal gender differences in maternal serum progesterone concentrations of Asian elephants	Behavioral responses of captive squirrel monkeys to alarm call playbacks	Living Seas Acoustic monitoring of bottlenose dolphin	Rhythm discrimination in bottlenose dolphin
Development of sex selection protocols for African and Asian elephant sperm	Big Cat Rescue	Auditory brain response in bottlenose dolphins	Rhythm production in bottlenose dolphin
Everglades winter manatee tracking study	Brown Pelican Conservation Project	Bioencapsulation of Metronidazole in brine shrimp	Sandtiger shark behavioral observations
Florida Bat Blitz 2006	Donation of 4 Equitainers to Miami Metrozoo	Colorimetric analysis of a body of water in a large aquarium using digital photography	Sea turtle index nest-monitoring program
Florida Butterfly Monitoring Network	Financial Support of the Conservation Breeding Specialist Group (CBSG)	Diadema restoration project	Spotted Eagle ray husbandry survey
Florida Panther Recovery Team	Humane Society	Formalin's effects on marine biofiltration nitrification	Tagging of post-rehabilitated juvenile green sea turtles utilizing a prototype satellite telemetry device
Florida Sandhill Crane Capture And Whooping Crane Family Health Assessment	Hurricane-stressed pine trees	Head and lateral line erosion in fish	Use of Regranex to treat head and lateral line disease in the ocean surgeon
Identification of Wildlife Species Found on Jacksonville Zoo Grounds	Integrated Primate Biomaterials Resource (IPBIR)	Health assessment modeling and effects of environmental contaminants	Miami Metrozoo Assessment of basal endocrine and seminal traits in otters
Marine Mammal Rescue Program	Make-a-Wish Foundation	Kilo calorie-based diets in sea turtles	Behavioral and hormonal changes during pair formation in captive Goeldi's monkeys
Monitoring stress in cheetahs at White Oak Conservation Center	Mating strategies and genetic variation in wild chimpanzees	Manatee Rehabilitation Partnership (MRP)	Butterfly Conservation Initiative
Mountain bongo repatriation to Mount Kenya World Heritage Site. Kenya	NEAUS (blankets for lab chimps)	Matching of 2-dimensional photographs and 3-dimensional objects	Cryopreservation of okapi spermatozoa
Multi-institutional study of bachelor gorilla groups	North American Save the Rhino Foundation	Object permanence in the bottlenose dolphin	Donation of 4 Equitainers to Miami Metrozoo
Range of the jaguar and Guyana Conservation Partnership links. Guyana	Recorded chimpanzee vocalizations for on going study on dialect changes in chimpanzee vocalizations	Observational study of the spotted eagle ray in a captive environment	Exotic zoonotic parasites in captive non-human parasites in Miami, Florida
Reed Bingham State Park gopher tortoise management project	Rehabilitation of indigenous wildlife	Physiological and biochemical neuroprotection in cetaceans: Are some marine mammal species safeguarded from the "the bends" (emboli formation and barotrauma)?	Florida Butterfly Monitoring Network
Study of a colony of captive naked mole-rats' optimum temperature given a wide range of temperatures	Relocation of American alligators	Pilot study on the population assessment of protected species in the Indian River Lagoon/ Banan River systems	Genetic evaluation of captive tree kangaroos
Survey of viral shedding in feces of snakes	Removal of invasive plants on Lion Country Safari property		Genetic relationship between the two populations of Indian rhinos in Assam (India) and Nepal. <i>India, Nepal</i>
Wood stork banding/tagging and satellite tracking	Spermatogenesis in captive sub-adult giraffe		Harpy eagle conservation in <i>Panama</i>
	Study of the accidental introduction of the African honey bee.		
	Training class for Florida Game and Fish Conservation Commission Officers		

2006 conservation projects

Herpetofaunal survey of remnant pine rockland habitat

Hormone profiles of captive male orangutans

Kinetics of feeding in Komodo dragons

Mountain bongo repatriation to Mount Kenya World Heritage Site. *Kenya*
Project Golden Frog/ Proyecto Rana Dorada. *Panama, United States, Costa Rica*

Prospective EEHV Study

Semen collection and cryopreservation of okapi spermatozoa

Tree Kangaroo Conservation Program in *Papua New Guinea*

Tree kangaroo habitat assessment and conservation project. *Australia*

Wild Cheetah Conservation Project. *Central America, India, Hong Kong, Malaysia, China*

Mote Marine Aquarium

Center for dolphin biology health, and conservation education

Coral restoration in the Florida Keys using colonies derived from aquacultured fragments

Louisiana Marine Mammal and Sea Turtle Stranding Network

Seafood Watch

Wild dolphin societies

Naples Zoo at Caribbean Gardens

Butterfly Conservation Initiative

Conservation Endowment Fund - Contributions

International Migratory Bird Day

Madagascar Fauna Group. *Madagascar*

Seafood Watch

Palm Beach Zoo at Dreher Park

Avian Scientific Advisory Group

Bowling for Rhinos - American Association of Zoo Keepers (AAZK)

Ecology of the bush dog. *Brazil*

International Migratory Bird Day

International Tapir Symposium. *Argentina, South America*

IUCN/SSC Tapir Specialist Group

Public/Private Partnership to Understand and Conserve Jaguar Habitat in the Yucatan. *Mexico*

Wildcast

Wildlife Rehabilitation and Release

Santa Fe Community College Teaching School

Behavioral responses of captive squirrel monkeys

Sea Turtle Awareness

Tree Kangaroo Conservation Program in *Papua New Guinea*

SeaWorld Orlando

Cetacean stranding program

Community based conservation through the establishment of a community forest in the buffer zone of the Bayang-Mbo wildlife sanctuary

Community-based conservation through rehabilitation of parrots and cockatoos in *Indonesia*

Conservation Across Cultures

Continuation Heron/ Steatitis Project

Don't Feed Wild Dolphins PSA

Ecology and conservation of cetaceans in Tanon Strait, *Philippines*

Egg incubation: king penguin

Ex situ Amphibian Conservation Planning Workshop

Florida manatee rescue and rehabilitation

Hubbs-Sea World Research Institute

Integration of environmental education & sustainable livelihoods at two coastal community resource centers

James River Atlantic Sturgeon Restoration Project

Killer whale energetics - how much food do they eat?

Killer whale growth and development

Long term monitoring of the Galapagos penguin and flightless cormorant. *Galapagos*

Manatee Rehabilitation Partnership (MRP)

Marine bird rescue and rehabilitation program

Marine mammal genetics

Marine mammal immunology

Marine mammal reproductive biology

Marine turtle stranding program

Monitoring reproduction and well being in marine mammals, including killer whales

Monkeys, Armadillos and Anteaters in your Backyard: Public awareness and conservation education in the Argentinean Gran Chaco. *Argentina*

Reproductively-related steroid hormones in captive sandtiger sharks

Sandtiger Shark Spinal Studies

Sea Turtle Rehabilitation

SCORE - SEXual COral REproduction workshop. *United States, Puerto Rico, Netherlands*

SCORE project. *United States, Puerto Rico, Netherlands*

Turtle Rescue and Rehabilitation

Wildlife Surgical Support Fund

Steve Martin's Natural Encounters, Inc.

California Condor Recovery Project: Rear and prepare for release to the wild

Conservation Endowment Fund - Contributions

Tampa's Lowry Park Zoo

Bushmeat Crisis Task Force (BCTF). *Africa*

Butterfly Conservation Initiative

California Condor Conservation Program - bumper sticker fundraiser

California Condor Recovery Project: Rear and prepare for release to the wild

Conservation Day

Conservation Lower Zambezi. *Zambia*

Education Center in Tapoh Village, Ruso District, Narathiwat Province, southern *Thailand*



horned tree frog from Panama

© paul crump

El Valle Amphibian Conservation Center. *Panama*

Florida Butterfly Monitoring Network

2006 conservation projects

Observational learning in orangutans	Study to explore the development of giant panda habitat restoration model	Chicago Wilderness - donation	Great Lake piping plover salvage captive rearing
Ontogeny of giant panda sociosexual behavior	Support of the Diane Fossey Gorilla Fund International. <i>Rwanda, Congo</i>	Chicago Wilderness: A regional nature reserve and consortium of conservation groups	Growth of Okapi
Post-conflict behavior in gorillas	Systematics of reptiles and amphibians	Chicagoland Environmental Network	Impact of zoo exhibits on adult visitors' knowledge and attitudes toward wildlife and their habitats
Proposal to study spatial and non-spatial abilities in two species of hornbill	Turtle Survival Alliance. <i>Worldwide</i>	Community conservation of Grevy's zebra in northern <i>Kenya</i>	International Bug Club: <i>Papua New Guinea</i>
Reproductive behavior of captive adult giant pandas	Wild Research	Comparison of West Nile Virus titers in four species of penguins: killed/ whole virus vaccine versus DNA plasmid vaccine	International Species Information System (ISIS) - donation
Research analysis network for Neotropical amphibians		Comprehensive health assessment of the Humboldt penguin population at Punta San Juan, <i>Peru</i>	International Tapir Symposium. <i>Argentina, South America</i>
Research on the foraging skills and cognitive capabilities of the giant panda		Conservation Breeding Specialist Group - donation	KEEP (Kakamega Environmental Education Project). <i>Kenya</i>
Seafood Watch		Conservation Breeding Specialist Group (CBSG)	Kinabatangan Orang-Utan Conservation Project. <i>Malaysia</i>
Securing critical rangeland for Grevy's zebra in northern <i>Kenya</i>	Financial support of the Conservation Breeding Specialist Group (CBSG)	Conservation Psychology	Madagascar Fauna Group. <i>Madagascar</i>
Sichuan Anzihe Nature Reserve Giant Panda Conservation Project. <i>China</i>	International Snow Leopard Trust. <i>Asia</i>	Determining baseline blood values including thyroid hormonal values in healthy captive Pacific Walrus	Northern Rangelands Trust. <i>Kenya</i>
Sichuan Baihe Nature Reserve Giant Panda Conservation Project. <i>China</i>	Wolong Panda Reserve. <i>China</i>	Development of metamodels for understanding biocomplexity in endangered species management	Nutrition of Ocelot Diets
Sichuan Baodinggou Nature Reserve Giant Panda Conservation Project. <i>China</i>		Evaluation of vaccine strategies against West Nile Virus	Okapi Epubu Project. <i>Congo</i>
Social dynamics and reproductive strategies of male mountain gorillas		Financial support of the Conservation Breeding Specialist Group (CBSG)	Pedigree reconstruction to sustain zoo populations
Social housing as potential stressor during giant panda pregnancy			Population structure and ranging patterns of Franciscana dolphins in <i>Argentina</i>
Social learning and cognition in apes			Sahara Conservation Fund. <i>Algeria, Chad, Niger, Ethiopia, Senegal</i>
Social learning in monkeys and prosimians			
Spatial memory recall in the giant panda			
Study of genetic diversity of Qinling giant panda. <i>China</i>			
Study of policy and application of community participatory approach in giant panda conservation. <i>China</i>			
Study of wild panda parasite infection through analysis of fecal samples (Fan Wenan			

IDAHO

Tautphaus Park Zoo

Conservation Endowment Fund - Contributions

Financial support of the Conservation Breeding Specialist Group (CBSG)

International Snow Leopard Trust. *Asia*

Wolong Panda Reserve. *China*

Zoo Boise

Captive breeding and display of the Southern Idaho ground squirrels

Zoo Boise Conservation Fund

ILLINOIS

Brookfield Zoo

AAMPA donation

Amphibian Recovery and Conservation Coalition. *Central America, South America, Costa Rica*

Analysis of reproductive hormones in mongoose lemurs

Assisted reproduction using sex-sorted sperm: A management strategy for captive gorillas

Center for dolphin biology health, and conservation education



micronesian kingfisher © jim schulz

2006 conservation projects

Securing critical rangeland for Grevy's zebra in northern Kenya

SSC - Holly Dublin support – donation

St. Louis Zoo (support of Punta San Juan) - donation

Study of species barriers to the transmission of chronic wasting disease in transgenic models of wildlife species

Understanding the role of physiology in reintroduction success: Stress and reproduction in reintroduced Canada Lynx

Wild dolphin societies

Wild Research

Zoo and Aquarium Teen Program Assessment Consortium (ZATPAC)

Cosley Zoo

Barn Owl Recovery Project

Blanding's Turtle Recovery Project and presentation

Butterflies and Blooms

International Migratory Bird Day

Junior Zookeeper Conservation Education

Glen Oak Zoo

Alligator Snapping Turtle Recovery Plan

Behavioral thermoregulation of California sea lions

Developmental effects of climate on the lion's mane

Donations to Center for Ecosystem Survival and Conservation Endowment Fund

Pig, Peccary and Hippo Holding Capacity Survey

Rodent Insectivore and Lagomorph TAG Holding Capacity Survey

Science Treasure Hunt

Henson Robinson Zoo
Chaco Center for Conservation and Research. *Paraguay*

John G. Shedd Aquarium

Antibiotic resistance in cetaceans at the Shedd Aquarium

Applied Advanced Reproductive Technologies in Cetaceans

Chicago Wilderness: A regional nature reserve and consortium of conservation groups

Comparison of West Nile Virus titers in four species of penguins: killed/ whole virus vaccine versus DNA plasmid vaccine

Design and fabrication of a device to meter and titrate methionosulfonate solution to support anesthetic procedures

Development of a Cetacean tissue culture line

Development of Endoscopic Retrieval Devices for Cetaceans

Evaluation of vaccine strategies against West Nile Virus

Georges Fellowship for Conservation

Interactive Oceanarium Design

International Coastal Cleanup participation

Quantitative analysis of major Urine constituents in free-ranging and captive dolphins

Renew the Blue - Green Team

Right Bite

River Watch

Sea otter conservation endocrinology

Seahorse Conservation

SCORE - SEXual CORal REproduction workshop. *United States, Puerto Rico, Netherlands*

SCORE project. *United States, Puerto Rico, Netherlands*

Surveillance Program for *Erysipelothrix rhusiopathiae*

Unionid Conservation Program

West Indian Rock Iguana Breeding Program

West Indian Rock Iguana Population Research. *Bahamas*

White Paper Project

Wild Research

Lincoln Park Zoo

Antibiotic resistance in cetaceans at the Shedd Aquarium

Ape behavior and hormonal response to alternation between zoo enclosures.

Assessment of impact from origin (wild caught vs. captive born) and rearing (parent vs. hand) on reproduction of captive parrot populations.

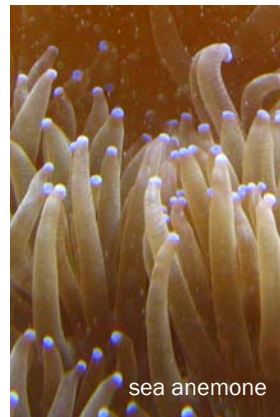
Behavior of a pack of wild dogs in a novel environment.

Behavioral and physiological effects of enclosure changes and exhibit construction on felids.

Behavioral monitoring of gibbons.

Biomedical survey of wild Black-footed ferrets.

Bushmeat Crisis Task Force (BCTF). *Africa*



sea anemone

Cataloging blood types for SSP populations of great apes

Characterization of the reproductive biology of the Sichuan takin and investigating factors affecting successful breeding.

Chicago Wilderness: A regional nature reserve and consortium of conservation groups

Cognitive research program at the Regenstein Center for Great Apes.

Comparison of West Nile Virus titers in four species of penguins: killed/ whole virus vaccine versus DNA plasmid vaccine

Composition and carotenoid concentration of casque and uropygial gland in the giant Indian hornbill: do carotenoids play a role in development of squamous cell carcinoma of the casque?

Consequences of inbreeding in the endangered black-footed ferret.

Demographic analysis and population modeling of the Tarangire National Park elephant population. *Tanzania*

Demographic comparison of wild chimpanzees from Gombe and managed population from North American zoos. *Tanzania, United States*

Describing reproductive biology in the southern three banded armadillo.

Detecting variance due to environmental stochasticity in vital rates of small populations.

Developing noninvasive endocrine methods for evaluation of reproductive status and stress levels in pygmy hippo.

Development of PopLink software

Diagnostic imaging of charismatic micro-invertebrates.

Does habitat fragmentation increase disease transmission between forest and human-dwelling rodents?	Immunization and antibody persistence to canine distemper and rabies vaccination in captive African wild dogs	Relationship between prey availability and jaguar densities in the Upper Parana Atlantic Forest of <i>Argentina</i>	Population census of free-roaming cheetah outside of protected areas in <i>South Africa</i>
Ecology of avian influenza in waterfowl in US zoos.	Investigating the impacts of female to female introduction on hormonal levels in the sable antelope.	Reproductive aging in female great apes: a longitudinal and comparative analysis.	INDIANA
Effects of centrifugation methods on plasma chemistry values of Northeastern Illinois Peregrine Falcon eyases.	Jaguar identification study	Serengeti Distemper and Rabies Vaccination Project	Fort Wayne Children's Zoo
Effects of population density in white-tailed prairie dogs: Do prairie dogs experience allee effects?	Jaguar population viability analysis - Upper Parana Atlantic Forest. <i>Argentina, Brazil, United States</i>	Social-learning of tool-use skills in great apes.	Butterfly Conservation Initiative
Effects of selective logging on Malayan sun bears and bearded pigs in lowland tropical rainforests of <i>Borneo</i>	Kin recognition in chimpanzees.	Tarangire National Park Elephant Project. <i>Tanzania</i>	Conservation Endowment Fund - Contributions
Evaluating visitor knowledge and attitudes toward chimpanzees at Cleveland Metroparks Zoo, Cleveland Museum of Natural History, and Great Lakes Science Center	Kinabatangan Orang-Utan Conservation Project. <i>Malaysia</i>	TB surveillance in AZA ungulates	Indianapolis Zoological Society, Inc.
Evaluation of conservation and science signage on zoo grounds.	Long-term behavioral monitoring study of great apes.	Tracking visitor behavior at the Regenstein Center for African Apes.	Analysis of the behavioral repertoire of a captive herd of African elephants and the behavioral effects of transfer to a larger exhibit
Evaluation of the Malott Family Zoo Intern Program.	Managing the Dynamic Social Life of Captive Adolescent Male Chimpanzees: A Multi-Institutional Study	Usage of vitamin B complex/Multivitamin mix with <i>Dendrobates tinctorius</i> and their affects on spindly leg syndrome.	Analysis of the development and management of African elephant calves
Exploring diachronic change in chimpanzee vocalization.	Mbeli Bai Gorilla Study. <i>Congo</i>	Use of camera traps for assessing abundance of wild populations	Assessment of health and aging in a captive colony of ring-tailed lemurs: Comparisons to a living wild population
Gombe chimpanzee health database (Phase I)	Mortality of first born mammals: implications for demography of wild populations.	Use of fecal markers in zoological parks	Biological samples from wild Ricord's iguanas and wild rhinoceros iguanas. <i>Dominican Republic</i>
Great ape conservation database.	Mulch maintenance: identifying the invertebrates in the exhibit mulch in Regenstein Center for African Apes.	Validating fecal hormone assays for rodent field research in Tanzania and monitoring stress in captivity. <i>Tanzania</i>	Cataloguing the visual displays and behaviors of a captive herd of African elephants: The influence of the birth of calves
Great ape use of enclosure space at RCAA	Non-invasive detection of stress hormones in wild female chimps - pilot phase.	Viral disease dynamics among Serengeti carnivores. <i>Tanzania</i>	Census of Ricord's and rhinoceros iguanas on Isla Cabritos, <i>Dominican Republic</i>
Great Lake piping plover salvage captive rearing	Nut-cracking skills in great apes.	Visitor behavior at McCormick Bird House.	Conditioning male rockhopper penguins for voluntary semen collection
Hormonal correlates of parental care in the Hylobatidae: Evolutionary significance.	Pharmacokinetics of a single intravenous and single oral meloxicam dose in two raptor species.	West Nile virus surveillance in AZA zoos	Crested Penguin Surveys in <i>Southern Chile</i>
How long will they live: Developing and evaluating standardized methods for estimating and reporting mortality rates in captive populations	Population habitat viability analysis for the chimpanzee population in Gombe Stream National Park, <i>Tanzania</i>	ZooRisk: A Risk Assessment Tool. Version 2.53.	Determination of the reproductive cycles of the West Indian rock iguanas, <i>Cyclura collei</i> , <i>Cyclura lewisi</i> and <i>Cyclura c. cornuta</i> through fecal steroid analysis
	Preliminary study of grip-strength in chimpanzees and gorillas.	Niabi Zoo	
		Developmental effects of climate on the lion's mane	
		Scovill Zoo	
		Land acquisition within the Ricon Rainforest, <i>Costa Rica</i>	

Determining baseline blood values including thyroid hormonal values in healthy captive Pacific walrus

Development of sex selection protocols for African and Asian elephant sperm

Documenting rockhopper penguin breeding behavior

Donation to Indianapolis Zoo's Conservation Programs

Financial Support - International Rhino Foundation. *Asia, Africa*

Fort Harrison State Park habitat restoration

Identification of major intestinal flora in wild populations of ring-tailed lemurs

International Elephant Foundation. *Africa, Asia*

International Iguana Foundation. *Dominican Republic, St. Lucia, Jamaica, Grand Cayman*

Male migration and bond formation patterns in semi-free ranging ring-tailed lemurs; a historical review

Pedigree reconstruction to sustain zoo populations

Proposal to investigate thyroid function in the bottlenose dolphin

Quantifying the nutritional and captive environment for Grand Cayman iguanas

Reptile and amphibian survey of Fort Harrison State Park

Ricord's Iguana Education Initiative

Using systematic observation to improve our knowledge of the behavior of southern white rhinoceros

Wild Research

Mesker Park & Botanical Garden

Conservation Endowment Fund
Donation to Cincinnati Zoo's Angel Fund

Donation to Indianapolis Zoo's Conservation Programs

Donation to Memphis Zoo's Conservation Programs

Financial support - International Rhino Foundation. *Asia, Africa*

Howell Wetlands restoration

Indiana bat activities for educators

International Tapir Symposium. *Argentina, South America*

Prairie Creek Barrens Nature Preserve

Sex differences in testosterone concentration across primate taxa

Small Wetland amphibian monitoring project

Potawatami Zoo

Butterfly Conservation Initiative

Sex differences in testosterone concentration across primate taxa

Blank Park Zoo

Centers for Ecosystem Survival
Parking Meter

Hornbill Research Foundation

International Snow Leopard Trust. *Asia*

Panamanian Golden Frog. *Panama*

Save the Golden Lion Tamarin. *Brazil*

David Traylor Zoo of Emporia

Chaco Center for Conservation and Research. *Paraguay*

Conservation Endowment Fund

Safari Adventure Day

Zoo Camp

KANSAS

Hutchinson Zoo

Chaco Center for Conservation and Research. *Paraguay*

Mississippi Kite

Prairie dog colony establishment

Wildlife rehabilitation

Lee Richardson Zoo

Black-footed ferret amyloid analysis

Center for Ecosystem Survival
Osa Peninsula, Costa Rica, Habitat Acquisition. *Costa Rica*

Collection of African lion testes for reproductive studies and sperm banking

Determination of estrous cyclicity, pregnancy and/or seasonality patterns in African lions

Development and identity of sexually dimorphic reproductive signals and responses by African elephants

Effective non-toxic control of Stable flies in a zoo located within a high concentration of commercial feedlots.

Elephant endothelial herpes virus study and testing

Establishment of laboratory protocol for hair identification by keratin on elephant and giraffe

Examination of ecology, population biology and conservation status of the Amur tiger utilizing non-invasively extracted DNA

International Snow Leopard Trust. *Asia*

IUCN/SSC Tapir Specialist Group

Jaguar identification study

Live-trapping & transplant of Scaled Quail to Sandsage prairie habitat on Oasis Ranch, Deerfield, Kansas

Mourning Dove Reward Banding Study

Prediction of North America river otter parturition through progesterone levels from feces

Provide biospecimens for Standards Collection and USFWS Forensic Laboratory

Relationship between adrenal activity, nutrition and socio-environmental factors on outbreaks of a debilitating skin disease in captive black rhinos

Zoological Information Management System (ZIMS) contribution

Rolling Hills Wildlife Adventure

Conservation Endowment Fund - contributions

Donation to North American Save the Rhinos Campaign

Donation to The Orangutan Conservancy. *Sumatra, Indonesia*

Financial support of the Conservation Breeding Specialist Group (CBSG)

Genetic relationship between the two populations of Indian rhinos in Assam (India) and Nepal. *India, Nepal*

Safari Adventure Day

Sedgwick County Zoo

American Livestock Breeders Conservancy

Assessing reproductive parameters in captive kori bustards using non-invasive fecal hormone analysis

Behavioral responses of captive squirrel monkeys

Bioparque Jui Rupá. *Paraguay*

Bushmeat Crisis Task Force (BCTF). *Africa*

Chaco Center for Conservation and Research. *Paraguay*

Community conservation of Grevy's zebra in northern *Kenya*

Conservation of the maned Wolf in the Brazilian Cerrado: Ecological, Behavioral, Epidemiological, and Reproductive Aspects. *Brazil*

Diane Fosey Gorilla Fund International. *Africa*

Eastern bongo repatriation. *Kenya*

Financial support - International Rhino Foundation. *Asia, Africa*

Genetic variability of the maned Wolf. *Argentina, Bolivia, Brazil*

Grevy's zebras in the Horn of *Africa*

Health evaluation of maned wolves in Parque Nacional Noél Kempff Mercado, *Bolivia*

International Elephant Foundation. *Africa, Asia*

International Iguana Foundation. *Dominican Republic, St. Lucia, Jamaica, Grand Cayman*

International Tapir Symposium. *Argentina, South America*

IUCN/SSC Tapir Specialist Group

Marianas Avifauna Conservation. *Commonwealth of N. Maryannas Islands*

Mass vaccination of Grevy's zebra against anthrax in northern *Kenya*

Northern Rangelands Trust. *Kenya*

Okapi Epulu Project. *Congo*

PAAZAB Action Plan Statement Amphibian Extinction Crisis Resolution. *South Africa*

Paraguay Conservation Action Partnership (CAP Paraguay). *Paraguay, Argentina, Bolivia*

Public/private partnership to understand and conserve jaguar habitat in the Yucatan. *Mexico*

Puerto Rican crested toad reintroduction and recovery efforts. *Puerto Rico*

Safari Edventure Day

Sahara Conservation Fund. *Algeria, Chad, Niger, Ethiopia, Senegal*

Save the Golden Frog. *Panama*

Securing critical rangeland for grevy's zebra in northern *Kenya*

Society for Conservation Biology

Sunset Zoo/Asuncion Zoo - Sister Zoo Project. *Paraguay*

Tree Kangaroo Conservation Program in *Papua New Guinea*

Tree Kangaroo Habitat Assessment and Conservation Project. *Australia*

Upfront penguin exhibit evaluation and wayfinding

Sunset Zoological Park

Bioparque Juí Rupá. *Paraguay*

Chaco Center for Conservation and Research. *Paraguay*

Chimpanzoo/ Primate Research Project

Lake Victoria Cichlid SSP (VSSP)

Paraguay Conservation Action Partnership (CAP Paraguay). *Paraguay, Argentina, Bolivia*

Safari Edventure Day

Sunset Zoo/Asuncion Zoo - Sister Zoo Project. *Paraguay*

Topeka Zoo

Safari Edventure Day

KENTUCKY

Louisville Zoological Garden

Bushmeat Crisis Task Force (BCTF). *Africa*

Butterfly Conservation Initiative

Feline coronavirus: Epidemiology, pathogenesis, diagnosis, and immunity in non-domestic felids

Lake Victoria Cichlid SSP (VSSP)

Marianas Avifauna Conservation. *Commonwealth of N. Maryannas Islands*

Minnesota Trumpeter Swan Restoration Program

Multi-institutional study of bachelor gorilla groups

Recovery of the endangered black-footed ferret

Wild Research

Newport Aquarium

Assessment of basal endocrine and seminal traits in otters

Crested penguin surveys in southern *Chile*

Louisiana

Alexandria Zoological Park

Behavioral responses of captive squirrel monkeys

Developmental effects of climate on the lion's mane

Audubon Aquarium of the Americas

Animal revival for catch and release fishing tournaments

Louisiana Marine Mammal and Sea Turtle Stranding Network

Sandtiger shark spinal studies

Audubon Center for Research of Endangered Species

Assisted reproduction using sex-sorted sperm: A management strategy for captive gorillas

Determination of the relatedness of a captive population of Mississippi Sandhill cranes to facilitate improvement of the genetic diversity of the wild population through captive breeding and release.

Influence of diet type on digestibility and nitrogen metabolism in African wildcats

Audubon Zoo

Aruba Island rattlesnake field research. *Aruba*

Butterfly Conservation Initiative

Developmental effects of climate on the lion's mane

Hornbill nest adoptions in *Thailand*

International Iguana Foundation. *Dominican Republic, St. Lucia, Jamaica, Grand Cayman*

Marianas Avifauna Conservation. *Commonwealth of N. Maryannas Islands*

Non-chemical control of parasites in ruminants

Puerto Rican crested toad reintroduction and recovery efforts. *Puerto Rico*

BREC's Baton Rouge Zoo

Assessment of basal endocrine and seminal traits in otters

Conservation Endowment Fund

Feline coronavirus: Epidemiology, pathogenesis, diagnosis, and immunity in non-domestic felids

2006 conservation projects

International Elephant Foundation. *Congo, India, Indonesia, Kenya, United States, Thailand, Botswana, Sumatra, Sri Lanka, Myanmar*

Non-chemical control of parasites in ruminants

Study of steryotypic behavior in rescued bears in *China*

MARYLAND

Maryland Zoo in Baltimore, The

Butterfly Conservation Initiative

Ecology and health status of maned wolves living in Brazilian and Bolivian National Parks. *Brazil, Bolivia*

Madagascar Fauna Group. *Madagascar*

Mid-Atlantic Conservation Alliance

Project Golden Frog/ Proyecto Rana Dorada. *Panama, United States, Costa Rica*

National Aquarium in Baltimore

ANAI - Stream Biomonitoring Program. *Costa Rica*

AquaEcosystem: Pioneering in applied education

Bahamas Coral Reef Conservation Initiative. *Bahamas*

BAMZ/BZS research grants and support

Blue poison dart frog captive breeding program
Brown pelican banding

Butterfly Conservation Initiative

Dune restoration at Little Creek Amphibious Base and Dam Neck Annex, Virginia

Elasmobranch immunology

Elasmobranch transfusion studies

Fort McHenry tidal wetland restoration project

Hemoparasites in Australian freshwater turtles

Howard Hughes Medical Institute AquaPartners with Baltimore City Public Schools

Illustrated investigations in aquarium science & conservation

Indirect blood pressure measurements in captive pygmy marmosets

International Migratory Bird Day

Investigation of surface elevation tables as a tool in tidal marsh restoration assessment

Ion analyzer for National Aquarium to improve coral husbandry at Bermuda Aquarium. *Bermuda*

Louisiana Marine Mammal and Sea Turtle Stranding Network

Marine Animal Rescue Program (MARP)

Marine Conservation Parking Meter

Marine Mammals Ashore: A Field Guide to Strandings, 2nd Edition

Mid-Atlantic Conservation Alliance

Minority Conservation Work-Study Program

MIRP (Impact of a visit to a zoo or aquarium)



blue
poison
dart
frog

Noise as a potential cause of stress in captive bottlenose dolphins

Phagocytosis and pinocytosis in peripheral blood of nurse sharks

Population assessment of free-ranging *Bufo guttatus* in the National Aquarium in Baltimore Rainforest exhibit

Project Golden Frog/ Proyecto Rana Dorada. *Panama, United States, Costa Rica*

Project Puffin

Rainforest Conservation Parking Meter. *Costa Rica, United States*

Reproductively-related steroid hormones in captive sandtiger sharks

Research at Jug Bay Wetlands Sanctuary

Satellite tracking of a rehabilitated loggerhead sea turtle

Schoolyard Spartina

Sea turtle protection and rehabilitation in *Costa Rica*

SCORE - SEXual CORal REproduction workshop. *United States, Puerto Rico, Netherlands*

SCORE project. *United States, Puerto Rico, Netherlands*

Submerged aquatic vegetation (SAV) restoration in the Chesapeake Bay

Tidal wetland restoration and monitoring in the Chesapeake Bay

TRACKS development

Salisbury Zoological Park

Bowling for Rhinos - American Association of Zoo Keepers (AAZK)

International Migratory Bird Day

Mid-Atlantic Conservation Alliance

MIRP (Impact of a visit to a zoo or aquarium)

Seafood Watch

MASSACHUSETTS

Buttonwood Park Zoo

Assessment of basal endocrine and seminal traits in otters

Biodiversity Day

Bug-a-Rama



tarantula

Build a Bird Feeder Workshop

Build a Bird House Workshop

Buttonwood Park Zoo Butterfly Garden

Buttonwood Stream Native Plant Restoration

Cape Cod Stranding Network

Family Fun Fall Campfires

Gardening for Butterflies (Lecture)

Harvest at the Farm

Junior Duck Stamp Art Workshop

New England Zoo and Aquarium Conservation Collaborative

North American River Otter Captive Breeding Study

Northern Diamondback Terrapin Head Start Program

Plymouth Redbelly Cooter Head Start Program

Understanding the role of physiology in reintroduction success: Stress and reproduction in reintroduced Canada Lynx

2006 conservation projects

Winter Tracking in the
Bioreserve

World Wildlife Federation
Cargo to Extinction Exhibit

Wylands Clean Water Tour

Franklin Park Zoo

Bushmeat Crisis Task Force
(BCTF). *Africa*

Conservation Endowment Fund
- Contributions

El Valle Amphibian
Conservation Center.
Panama

International Snow Leopard
Trust. *Asia*

International Tapir Symposium.
Argentina, South America

New England Zoo and
Aquarium Conservation
Collaborative

New England Aquarium

Bahamas Coral Reef
Conservation Initiative.
Bahamas

Cape Cod Stranding Network

Great Lake Piping Plover
Salvage Captive Rearing

Lake Victoria Cichlid SSP
(VSSP)

Louisiana Marine Mammal and
Sea Turtle Stranding
Network

Zoo and Aquarium Teen
Program Assessment
Consortium (ZATPAC)

MICHIGAN

Binder Park Zoo

Binder Park Zoo Eastern Box
Turtle Project

Binder Park Zoo Educational
Programs

Butterfly Conservation Initiative

Cheetah Conservation Fund

International Snow Leopard
Trust

Mexican Wolf Reintroduction
Project

MIRP (Impact of a visit to a zoo
or aquarium)

Piping Plover Patrol/Recovery
Program

Prairie habitat restoration
project

Seafood Watch

Wolf Awareness- Timber Wolf
Alliance

Detroit Zoological Park

Amboseli Elephant Trust

Bushmeat Crisis Task Force
(BCTF). *Africa*

Butterfly Conservation Initiative

Cryptobranchid Interest Group

Development of new
technologies for
conservation of endangered
amphibians

Great Lake piping plover
salvage captive rearing

IUCN Amphibian Specialist
Group

Lake Victoria Cichlid SSP
(VSSP)

Madeleine Berman Academy
for Humane Education

Movement patterns habitat
preferences and natural
history of the Armenian
viper in *Armenia*

Osprey Reintroduction in SE
Michigan

Partula Field Program
Consortium

Peru Adopt-A-School Program.
Peru

Project Golden Frog/ Proyecto
Rana Dorada. *Panama,
United States, Costa Rica*

SE Michigan Karner blue
butterfly reintroduction

Tree Kangaroo Conservation
Program in *Papua New
Guinea*

Trumpeter swan reintroduction



John Ball Zoological Garden

Butterfly Conservation Initiative

Comparison of West Nile Virus
titers in four species of
penguins: killed/ whole
virus vaccine versus DNA
plasmid vaccine

Conservation Education in
Pastoral Communities:
Educating Teachers to
Enhance Local
Understanding of Human-
Wildlife Interactions. *Kenya*

Evaluation of vaccine
strategies against West Nile
Virus

Great Lake piping plover
salvage captive rearing

Mass vaccination of Grevy's
zebra against anthrax in
northern *Kenya*

Natural history and
reintroduction of the
Aneгада Iguana. *British
Virgin Islands*

Northern Rangelands Trust.

Project Golden Frog/ Proyecto
Rana Dorada. *Panama,
United States, Costa Rica*

Securing critical rangeland for
Grevy's zebra in northern
Kenya

Potter Park Zoological Gardens

Analysis of reproductive
hormones in mongoose
lemurs

Sperm cryopreservation for IVF
and embryo transfer in the
fishing cat

MINNESOTA

Como Zoo and Conservatory

Advances in operant
conditioning throughout
Como Zoo

Seafood Watch

Minnesota Zoological Garden

Adopt-A-Park: Ujung Kulon and
Way Kambas National
Parks. *Indonesia*

BioBrasil Research and
Fundraising. *Brazil, United
States*

Community conservation of
Grevy's zebra in northern
Kenya

Determination of the
relatedness of a captive
population of Mississippi
Sandhill Cranes to facilitate
improvement of the genetic
diversity of the wild
population through captive
breeding and release.

Development of PopLink
software

Effects of selective logging on Malayan Sun Bears and Bearded pigs in lowland tropical rainforests of Borneo

Field Trip Earth

Grevy's zebra Keeper Earthwatch Expedition Program

How long will they live: Developing and evaluating standardized methods for estimating and reporting mortality rates in captive populations

Mass vaccination of Grevy's zebra against anthrax in northern Kenya

Mexican Wolf Reintroduction Project

Minnesota trumpeter swan restoration program

Northern Rangelands Trust. Kenya

Seafood Watch

Securing critical rangeland for Grevy's zebra in northern Kenya

South China Tiger Protection Program. China

Sumatran Tiger Conservation Program. Indonesia

Tree Kangaroo Conservation Program in Papua New Guinea

Ulysses S. Seal Conservation small grant fund

Using estrous cycle inhibition to improve artificial insemination in the clouded leopard

Wolf Awareness - Timber Wolf Alliance

Zoomobile Community Outreach Education Program

MISSISSIPPI

Jackson Zoological Park

International Tapir Symposium. Argentina, South America

Minnesota trumpeter swan restoration program

Northern Rangelands Trust. Kenya

Securing Critical Rangeland for Grevy's zebra in northern Kenya

Using estrous cycle inhibition to improve artificial insemination in the clouded leopard

MISSOURI

Dickerson Park Zoo

Asian elephant semen collection

Comparison of Asian elephant milk components with calf growth weights, weaning schedules and maternal reproductive status

Conservation Endowment Fund - Contributions

Detection of fetal gender differences in maternal serum progesterone concentrations of Asian elephants

Dong Phayayen-Khao Yai Carnivore Conservation Project. Thailand

Education programs within the surrounding communities.

El Valle Amphibian Conservation Center. Panama

Elephant-human coexistence - how elephants persist in traditional agricultural systems of South Asia

Financial Support of the Conservation Breeding Specialist Group (CBSG)

Hyacinth Macaw Project in Brazil

Investigation into a reproductive event in a Fer-de-lance

Lateral trunk bias in the African Elephant

Madagascar Fauna Group. Madagascar

Maned Wolf Research Project in Brazil

Observation and analysis of mating behavior of Asian elephants and associated endocrine analysis

Pan African Association of Zoos, Aquariums and Botanical Gardens (PAAZAB). Africa

Utilization of endocrine analysis to investigate estrous synchronization in the female Asian elephant

Winter Ecology and the Effects of Fire on Bats in Southwest Missouri

Zoo Conservation Outreach Group (ZCOG)

Kansas City Zoo

Behavioral responses of captive squirrel monkeys

Community conservation of Grevy's zebra in northern Kenya

Descriptive epidemiology of captive slender-horned gazelle and gerenuk in the U.S.

Evaluation of a newer phlebotomy technique in fish

Financial support - International Rhino Foundation. Asia, Africa

Financial support of the Conservation Breeding Specialist Group (CBSG)

Friends of Conservation: Tarangire Elephant Project. Tanzania

Indirect oscillometric blood pressure monitoring in African elephants

Lateral trunk bias in the African Elephant

Mass vaccination of Grevy's zebra against anthrax in northern Kenya

Northern Rangelands Trust. Kenya

Northern Rangelands Trust: II Negwesi black rhino monitoring. Kenya

Orangutan Conservancy

Project Arara Azul

Securing critical rangeland for Grevy's zebra in northern Kenya

Skin biopsies - Center for Reproduction of Endangered Species

St. Louis center for Equid Conservation: Anthrax response for Grevy's zebra

WAZA/CBSG Amphibian Ark Initiative

Zoo Conservation Outreach Group (ZCOG)

Saint Louis Zoological Park

African wild ass: Population dynamics, distribution, and status in Eritrea

Analysis of reproductive hormones in mongoose lemurs

Antelope mother/infant behavior study

Anthrax vaccination trial of Grevy's zebra at Lewa Wildlife Conservancy. Kenya

Artificial Insemination in gray and Mexican gray wolves

Assessment of basal endocrine and seminal traits in otters

Avian disease in a threatened ecosystem: (I) Effects of host mating on ectoparasite loads and virulence in the Galapagos Hawk, a threatened island endemic, and (II) avian disease vector survey on

2006 conservation projects

Santa Cruz and Santiago Islands, Galapagos, <i>Ecuador</i>	Conservation Education in Pastoral Communities: Educating teachers to enhance local understanding of human-wildlife interactions. <i>Kenya</i>	Effect of sport hunting on mountain nyala behavioural ecology. <i>Ethiopia</i>	Hemoparasite and immunologic assessment of brown pelicans in the Galapagos Islands. <i>Ecuador</i>
Avian health survey of flightless cormorants and Galapagos penguins in the Galapagos Islands, <i>Ecuador</i>	Conservation of Sahelo-Saharan antelope. <i>Niger</i>	Endangered Channel Island fox recovery planning	Impacts of parasites on phenotypes involved in courtship and mate selection: Case of red-footed boobies in Galapagos Islands. <i>Ecuador</i>
Avian Pox in Galapagos Endemic Birds. <i>Ecuador</i>	Continued monitoring of the predators on Lewa Wildlife Conservancy. <i>Kenya</i>	Environmental education for the conservation of Mountain Nyala and its habitat at the Bale Mountains National Park, <i>Ethiopia</i>	International Elephant Foundation. <i>Africa, Asia</i>
Behavioral endocrinology, ecology and conservation of the rare gelada baboon in the Menz Highlands, <i>Ethiopia</i>	Cryptobranchid Interest Group	Expanding Ivoloina Zoo staff capacity in veterinary care and the exhibition/husbandry of invertebrates.	Investigation of the efficacy of Deslorelin implants in designated species
Biomedical survey of prosimian primates in <i>Madagascar</i>	Detailed species mapping and taxonomic index to conserve the amphibian biodiversity of Betampona Natural Reserve, <i>Madagascar</i> .	Feeding ecology of <i>Eulemur fulvus albifrons</i> in Betampona Natural Reserve, <i>Madagascar</i>	<i>Lemur catta</i> , Xerophytic forest, and villages: A socio-ecological study of Madagascar's national animal in its primary remaining habitat. <i>Madagascar</i>
Blood Parasites in Galapagos Birds. <i>Ecuador</i>	Development of sex selection protocols for African and Asian elephant sperm	Fitness Consequences of Haemoproteus in Great Frigate Birds on Isla Genovesa, Galapagos. <i>Galapagos Islands</i>	Madagascar Fauna Group. <i>Madagascar</i>
Bushmeat Crisis Task Force (BCTF). <i>Africa</i>	Developmental effects of climate on the lion's mane	Funding construction of the first phase of the Ivoloina Training Center, <i>Madagascar</i>	Marianas Avifauna Conservation. <i>Commonwealth of N. Maryannas Islands</i>
Community conservation of Grevy's zebras: Chew Bahir & the Hamar and Borana peoples. <i>Kenya</i>	Distribution of MHC variation in Galapagos birds. <i>Ecuador</i>	Genetic structure, past and present, in the endangered Galapagos penguin. <i>Ecuador</i>	Mass vaccination of Grevy's zebra against anthrax in northern <i>Kenya</i>
Community Conservation of Grevy's zebra in Northern <i>Kenya</i>	Ecoagriculture curriculum development, training and research at the MFG's Ivoloina Conservation Training Center and the University of Toamasina, <i>Madagascar</i>	Golden Mantled Tree Kangaroo Rabbit Farming Project. <i>Papua New Guinea</i>	Mountain bongo repatriation to Mount Kenya World Heritage Site. <i>Kenya</i>
Comparision of the feeding behavior of four ring-tailed lemur troops in Berenty following removal of all leucaena trees from the range of two of the four troops. <i>Madagascar</i>	Ecology of the bush dog. <i>Brazil</i>	Grevy's Zebra Ambassador Program	Movement patterns and natural history of the Armenian viper in <i>Armenia</i>
Comprehensive health assessment of the Humboldt penguin population at Punta San Juan, <i>Peru</i>	Ecosystem Monitoring for Improved Biodiversity Conservation in Community-Owned Conservation Areas of Northern <i>Kenya</i>	Grevy's Zebra Bursary Program	Northern Rangelands Trust.
Conservation Center for the American Burying Beetle	Effect of nutrition on health and reproduction of Pallas' cats	Grevy's zebra Keeper Earthwatch Expedition Program	Okapi Project in the Democratic Republic of <i>Congo</i>
		Grevy's Zebra Scout Program	Parentage determination on the captive population of horned guans using microsatellite DNA.
		Grevy's Zebra Trust	Pilot project to establish four demonstration grass plots with the aim of promoting improved land management within the Northern Rangelands Trust focal areas. <i>Kenya</i>
		Grevy's zebra: Emergency response to anthrax outbreak in <i>Kenya</i>	Preliminary evaluation of the status of agroforestry programs and training needs in Toamasina, <i>Madagascar</i>
		Grevy's zebras in the Horn of <i>Africa</i>	
		Habitat use and movement patterns of the timber rattlesnake in eastern <i>Missouri</i>	



mexican gray wolf

© shirley haden

2006 conservation projects

Preliminary ichthyological survey of Betampon Natural Reserve and Parc Ivoloina. *Madagascar*

Production of the Booklet "Threatened Frogs of Madagascar" to raise awareness and funds to conserve Madagascar's amphibians

Re-analysis of Hellbender Habitat Studied from 1968-1980. *Cameroon, Central Africa*

Reintroduction of the Virgin Island Boa to the *US Virgin Islands*

Resurveying *Prolemur simus* sites to determine population numbers of a critically endangered Malagasy Primate. *Madagascar*

Retrospective study of iron storage disease in captive Egyptian fruit bats at multiple institutions: characterization of histopathologic lesions and relationship to management factors

Sahara Conservation Fund. *Algeria, Chad, Niger, Ethiopia, Senegal*

Seafood Watch

Securing critical rangeland for Grevy's zebra in northern *Kenya*

Status assessment of wildlife in the Ogaden region of *Ethiopia*

Study of group size, social structure, seed dispersal and food selection in the white-fronted brown lemur in Betampon Natural Reserve, *Madagascar*

Support for Catolica University's Amphibian Conservation Program, Balsa de losSapos. *Ecuador*

Tree Kangaroo Conservation Program in *Papua New Guinea*

Tree kangaroo habitat assessment and conservation project. *Australia*

Veterinary pathologist based in the *Galapagos Islands*

Workshop on capacity building in *Madagascar*

Wild Canid Survival & Research Center

Artificial insemination in gray and Mexican gray wolves

Mexican Wolf Reintroduction Project

MONTANA

ZooMontana

Can we use smaller doses of PZP (Porcine Zona Pellucida) and still have it be effective?

Lyophilized PZP

Urine and fecal analysis along with PZP titer testing

Use of PZP immunocontraception in Dall sheep and pygmy goats

Wild Horse Contraception Project

NEBRASKA

Lincoln Children's Zoo & Botanical Gardens

Bushmeat Crisis Task Force (BCTF). *Africa*

Rodrigues Environmental Educator. *Rodrigues Island*

Omaha's Henry Doorly Zoo

Assessment of basal endocrine and seminal traits in otters

Assisted reproduction using sex-sorted sperm: A management strategy for captive gorillas

Bamboo Micropropagation

Basal reproductive biology of the sand cat and black-footed cat

Bermuda Fern Project. *Bermuda*

Biomedical survey of cheetahs *in situ* and *ex situ*

Conservation of Madagascar's endemic orchids. *Madagascar*

Coral Propagation Project

Cryptobranchid Interest Group

Cypripedium Project

Development of a self networking sensor system

Disease management of African buffalo using assisted reproduction. *South Africa*

Feeder cricket nutrition project

Feline hearing project

Identification of spiral-shaped bacteria associated with intestinal disease of captive nonhuman primates

Improving assisted reproduction techniques in snakes

Influence of diet type on digestibility and nitrogen metabolism in African wildcats

International Tapir Symposium. *Argentina, South America*

Madagascar Fauna Group. *Madagascar*

Madagascar Orchid Project. *Madagascar*

Omaha's Henry Doorly Zoo Amphibian Conservation Area

Production of recombinant tiger gonadotropins for assisted reproduction in felids

Reintroduction of native lilies at Boyer Chute Refuge

Rescue project of *Cypripedium candidum*, a threatened species

SCORE - SExual COral REproduction workshop. *United States, Puerto Rico, Netherlands*

SCORE project. *United States, Puerto Rico, Netherlands*

Sex differences in testosterone concentration across primate taxa

South African Amphibian Conservation Center and Johannesburg Zoo African Frog Research Project. *South Africa*

Stress in Okapi

Training of American alligators for non-invasive semen collection

Uniting conservation genetics and conservation education in Madagascar, Madagascar Biodiversity and Biogeography Project. *Madagascar*

Western Prairie Fringed Orchid Project

NEW JERSEY

Adventure Aquarium

Lake Victoria Cichlid SSP

Mid-Atlantic Conservation Alliance

Sea Turtle Reproductive Physiology

Bergen County Zoological Park

Borderlands Jaguar Detection Project

Restoration of wintering bat habitat in Morris County, NJ

Cape May County Park Zoo

Martinated Box Turtles

Mid-Atlantic Conservation Alliance

Mountain Bongo Repatriation to Mount Kenya World Heritage Site. *Kenya*

New Jersey Endangered and Non-game Species Program within the NJ Division of Fish and Wildlife

Project Golden Frog/ Proyecto Rana Dorada. *Panama, United States, Costa Rica*

Turtle Back Zoo

Mid-Atlantic Conservation Alliance

NEW MEXICO

Alameda Park Zoo

White Sands Pupfish Exhibition and Display

Albuquerque Biological Park

Bahamas Coral Reef Conservation Initiative. *Bahamas*

Butterfly Conservation Initiative

Cataloging blood types for SSP populations of great apes

Community conservation of Grevy's zebra in northern Kenya

Development of sex selection protocols for African and Asian elephant sperm

Ecology of bobcats in the Chihuahuan Desert of New Mexico

Effects of psychoactive drugs on exotic animals in zoos

Elephant Manager's Association Sponsor

Fecal steroids in Matschie's tree kangaroo

Grevy's Zebra Scout Program

Immunization and antibody persistence to canine distemper and rabies vaccination in captive African wild dogs

International Tapir Symposium. *Argentina, South America*

Mexican Wolf Reintroduction Project

Northern Rangelands Trust. *Kenya*

Response of mountain lions to scents from other large felids and implications for non-lethal control techniques

Sandtiger shark spinal studies

Securing critical rangeland for Grevy's zebra in northern Kenya

Zoo fecal marker survey

Zoological management of rhinos and tapirs in captivity

Living Desert Zoo & Gardens State Park

"You Are What You Eat"

Attractants for Jaguars

Bobcat range and population study within the Chihuahuan Desert

Bolson Tortoise Conservation

Contraception trial studies in pronghorn

Docent Training

Dynamics of mountain lions and reintroduced Desert big horn sheep

Educational tours

Exploring Nature's Plumbing System

Field Trip Earth

Leopold Education Teachers Workshop

March for Parks

Mescal Roast and Mountain Spirit Dances

Mexican Wolf Teachers

Outreach talks

ParKids: Animal Adaptations to the Desert

Pre-School Story Time

Star Parties

Wildlife rehabilitation, holding and treatment

Xeriscape Workshop

Zoo Camp

NEW YORK

Bronx Zoo

Butterfly Conservation Initiative

Determining baseline blood values including thyroid hormonal values in healthy captive Pacific walrus

Development of an Environmental Teaching Suitcase for Northern Congo (Brazzaville). *Congo*

Development of electroejaculation in the Indian rhinoceros

Genetic relationship between the two populations of Indian rhinos in Assam (India) and Nepal. *India, Nepal*

Goulougo Triangle Chimpanzee Project. *Congo*

Goulougo Triangle Chimpanzee Study, Republic of Congo

International Iguana Foundation. *Dominican Republic, St. Lucia, Jamaica, Grand Cayman*

Madagascar Fauna Group. *Madagascar*

Madidi Jaguar Project. *Bolivia*

Mbeli Bai Gorilla Study. *Congo*



MIRP (Impact of a visit to a zoo or aquarium)

Monitoring jaguar in the Cockscomb Basin Wildlife Sanctuary. *Belize*

Project Golden Frog/ Proyecto Rana Dorada. *Panama, United States, Costa Rica*

Protection of the Sumatran rhino. *Indonesia*

Society for Conservation Biology

Buffalo Zoological Gardens

Adde-Freeland Wildlife Rehabilitation Center

Amphibian Recovery and Conservation Coalition. *Central America, South America, Costa Rica*

Association of Zoological Horticulture Conservation Fund

Conservation Endowment Fund - contributions

Correlations of arousal and vocal output in Asian elephants

El Valle Amphibian Conservation Center. *Panama*

Electrocardiography in Elephants

Elephant Manager's Association Sponsor

Gauging bite strength at different gapes of lions and tigers

Genetic relationship between the two populations of Indian rhinos in Assam (India) and Nepal. *India, Nepal*

Grizzly & Wolf Discovery Center

International Elephant Foundation. *Africa, Asia*

International Snow Leopard Trust. *Asia*

Pregnancy diagnosis through urine hormone analysis in giraffes

Puerto Rican crested toad reintroduction and recovery efforts. *Puerto Rico*

Sahara Conservation Fund.
Algeria, Chad, Niger, Ethiopia, Senegal

Turtle Survival Alliance.
Worldwide

Using estrous cycle inhibition to improve artificial insemination in the clouded leopard

Central Park Zoo

Assisted reproduction using sex-sorted sperm: A management strategy for captive gorillas

Puerto Rican crested toad reintroduction and recovery efforts. *Puerto Rico*

New York Aquarium

Lake Victoria Cichlid SSP (VSSP)

MIRP (Impact of a visit to a zoo or aquarium)

Preliminary ichthyological survey of Betampon Natural Reserve and Parc Ivoloina. *Madagascar*

Wildlife Conservation Society: Seasonal movement patterns of sand tiger sharks in the western *Atlantic Ocean*

Workshop on Capacity Building in *Madagascar*

Prospect Park Zoo

Monitoring jaguar in the Cockscomb Basin Wildlife Sanctuary. *Belize*

Rosamond Gifford Zoo at Burnet Park

Chittenango ovate amber snail vegetation nutrient analysis and histopathology

Detection of fetal gender differences in maternal serum progesterone concentrations of Asian elephants

Development of sex selection protocols for African and Asian elephant sperm

Lake Victoria Cichlid SSP (VSSP)

Seafood Watch

Seneca Park Zoo

Brighton Canada Goose Task Force

Butterfly Beltway

Butterfly Conservation Initiative

Chittenango ovate amber snail vegetation nutrient analysis and histopathology

Conservation Meters dedicated to coral reef conservation in Palau and rainforest conservation in the Pantanal Pacific Ocean, *Argentina*

Donation to Orangutan Foundation International Tree Project. *Borneo*

Donation to Riddle's Elephant Sanctuary

El Valle Amphibian Conservation Center. *Panama*

Lake sturgeon restoration in the Genesee River at Seneca Park

Madagascar Fauna Group

Madagascar Fete. *Madagascar*

Sex differences in testosterone concentration across primate taxa

Veterinary support of lemur conservation and research in Ranomafana National Park, *Madagascar*

Trevor Zoo

Bog turtle survey and habitat restoration

Environmental Council Initiatives

Purple loosestrife control

Red Ape Project collaboration

Support of Project Piaba

NORTH CAROLINA

North Carolina Aquarium at Fort Fisher

AmeriCorps*NCCC Service Team Project at the NC Aquariums

Aquatic Invasive Species Outreach: A Tool Kit for Educators in American Zoo and Aquarium Association Member Institutions

Captive spawning and rearing freshwater fishes

Captive spawning and rearing marine fishes and invertebrates

Flood of Mud: The Roanoke River Past and Future

Loggerhead Turtle Hatchling Development

Marine Mammal Stranding Response Team

North Carolina Oyster Hatchery Program

Sea Turtle Stranding Response Team

Southeast Phytoplankton Monitoring Network (SEPMN)

North Carolina Aquarium at Pine Knoll Shores

Bahamas Coral Reef Conservation Initiative. *Bahamas*

North Carolina Aquarium on Roanoke Island

AmeriCorps*NCCC Service Team Project at the NC Aquariums

Big Sweep

Earth Day Expo



sea cucumber

First flight middle school wildlife habitat garden

Harvey estuarine access demonstration rain gardens

Investigation of the efficacy of Deslorelin implants in designated species

Manteo Middle School Demonstration Rain Gardens

Marine Mammal Stranding Network

MIRP (Impact of a visit to a zoo or aquarium)

North Carolina Oyster Hatchery Program

Purple Martin Conservation Project

Sea turtle rehabilitation

North Carolina Zoological Park

Analysis of Time and Activity Budgets in a Captive Colony of Horned Puffins

Are the Messages Being Received? A study of the Effectiveness of Interpretives at the NC Zoo

Assessing seasonal and reproductive factors that stimulate feather plucking by a wattled crane

Cape Fear Shiner Recovery

Caraway-Schweintz Sunflower Mitigation Site

Contributor to the AZA Elephant TAG/SSP's Elephant Exhibit Design Resource

Elephants of *Cameroon*

Environmental Management System Certification includes objectives and targets and applied research for sustainable operations of the horticulture section at the Zoo

Field Trip Earth

Ginseng and Basic Mesic Forest Management Plan

Greater Uwharries Conservation Partnership

Life history and behavioral aspects of the Cape Fear Shiner

Making Connections: Linking schools in Uganda and North Carolina. *Uganda, United States*

North Carolina Natural Heritage Program

Pollution prevention planning, water testing, and water quality environmental education workshops

Puerto Rican crested toad reintroduction and recovery efforts. *Puerto Rico*

Reintroduction of Schweintz Sunflower (*Helianthus schweinitzii*) to Purgatory Mountain

Ridges Mountain Management Plan

Survey of amphibians and reptiles at the North Carolina Zoological Park

Tooro Garden Development Plan. *Uganda*

Western North Carolina Nature Center
Butterfly Conservation Initiative

NORTH DAKOTA

Dakota Zoo

Dakota Zoo Conservation Day
Golden Eagle Migration Project
Handedness in captive raptors
Primate digit lengths
Raptor rehabilitation

OHIO

African Safari Wildlife Park

Crested penguin surveys in southern *Chile*
Detection of fetal gender differences in maternal serum progesterone concentrations of Asian elephants

Financial support of the Conservation Breeding Specialist Group (CBSG)

Mountain bongo repatriation to Mount Kenya World Heritage Site. *Kenya*

Akron Zoological Park

Assessment of basal endocrine and seminal traits in otters
Butterfly Conservation Initiative
Lake Victoria Cichlid SSP (VSSP)

Cincinnati Zoo & Botanical Garden

African Violet Conservation Project
Application of doppler ultrasound technology to the estrous cycle of captive Asian rhinoceros species
ARCAS Scarlet Macaw Conservation in the Mayan Biosphere Reserve. *Guatemala*

Assessment of basal endocrine and seminal traits in otters

Banking endangered plant tissues in liquid nitrogen

Basal reproductive biology of the sand cat and black-footed cat

Bushmeat Crisis Task Force (BCTF). *Africa*

Butterfly Conservation Initiative

Centre for Education, Research and Conservation of Primates and Nature

Cheetah Conservation Fund. *Namibia, Kenya, South Africa*

Collecting and development of propagation protocols for the Northern wild monkshood.

Collection, propagation and cryopreservation of three endangered Florida pawpaws

Compounds Conferring Resistance to Chestnut Blight

Conservation Education and Exological Stewardship for the Mill Creek in Cincinnati, Ohio

Conservation of Sahelo-Saharan antelope. *Niger*

Crested Penguin Surveys in Southern *Chile*

Cryptobranchid Interest Group

Developing acclimation protocols for Avon Park harebells for reintroduction

Developing rooting and acclimation methods for the Cumberland sandwort for reintroduction

Development of electroejaculation in the Indian rhinoceros

Development of propagation methods for Small prickly ash

Donation to Cincinnati Zoo's Angel Fund

Early Fetal Sexing in the Rhinoceros

Effect of nutrition on health and reproduction of Pallas' cats

Effects of auxins on rooting in Todsen's pennyroyal, Sentry milkvetch and Maguier's primrose.

Egg incubation: King penguin

Elephant Conservation in *Sumatra*

Endangered Plant Propagation Program

Establishment of baseline urinalysis parameters in the rhinoceros

Evaluation of stored spores and spore longevity in Carolina spleenwort

Feline coronavirus: Epidemiology, pathogenesis, diagnosis, and immunity in non-domestic felids

Financial support - International Rhino Foundation. *Asia, Africa*

Fishing Cat SSP fundraising

Frozen Garden

Genetic relationship between the two populations of Indian rhinos in Assam (India) and Nepal. *India, Nepal*

Grand Valley Reclamation Project

Hawaiian fern spore longevity study

In vitro fertilization, embryo cryopreservation and embryo transfer for propagation of the Brazilian ocelot

In vitro growth and rooting in the Texas trillium

In vitro propagation of Arizona cliff-rose

In vitro propagation of Florida ziziphus

Is the Aldehyde Odorant of the Crested Auklet a Courtship Pheromone?

Large-scale propagation methods for the Roan Mountain bluet

2006 conservation projects

Local Flora Project	Sahara Conservation Fund. <i>Algeria, Chad, Niger, Ethiopia, Senegal</i>	Asian Turtle Planning Session	Cheetah Conservation Fund. <i>Namibia, Kenya, South Africa</i>
Madagascar Fauna Group		Assessing the population genetic structure of Blanding's turtles from Northern Ohio and Michigan	Cheetah stress and reproductive hormones under various housing conditions
Manatee Rehabilitation Partnership (MRP)	Securing critical rangeland for Grevy's zebra in northern Kenya	Assessment of Chaplin's barbet in the Kafue Flats, Zambia, for Red Listing Purposes. <i>Zambia</i>	Cleveland Metroparks turtle survey
Mass vaccination of Grevy's zebra against anthrax in northern Kenya	Seed dormancy in the Tahoe yellow cress	Audubon Nature Institute Hurricane Katrina Relief Fund	Cleveland Museum of Natural History Lake Erie Ecology and Conservation Symposium
Mbeli Bai Gorilla Study. <i>Congo</i>	Semen cryopreservation and <i>in vitro</i> fertilization in fishing cats	Behavior and cortisol levels of captive African elephants and black rhinoceroses	Comparative neuroanatomical investigations of primates and other mammals
Movement patterns and population structure of Japanese giant salamander, in the Tsuchiya River, Tottori Prefecture. <i>Japan</i>	Sperm cryopreservation for IVF and embryo transfer in the fishing cat	Behavioral effects of the death of a silverback on a bachelor and mixed-sex group	Conservation and Status of Rameshwaram Parachute Spider in Southern <i>India</i>
North American river otter captive breeding study	Studies on <i>in vitro</i> growth of endangered species of quillwort	Behavioral endocrinology, ecology and conservation of the rare gelada baboon in the Menz highlands, <i>Ethiopia</i>	Conservation Endowment Fund - Contributions
Northern Rangelands Trust.	Study of ant-caterpillar relationships in the Karner blue butterfly reintroduction program	Big Creek Clean Up	Conservation genetic analysis of the Harpy eagle of Brazil: Can Amazonian or hybrid individuals be used in Atlantic rainforest reintroductions? <i>Brazil</i>
Ohio Biological Survey	Toxin assessment in tissues and organs of alcid taxa on St. Lawrence Island, Alaska	Biodiversity and ecosystem functioning in the Galapagos Marine Reserve. <i>Ecuador</i>	Conservation genetics of the parma wallaby
Onset of puberty in the Sumatran rhinoceros	Ultrasound and endocrine monitoring of the reproductive cycle of the Indian rhinoceros and the development of transcervical artificial insemination	Blanding's turtle conservation and monitoring program	Conservation of the endangered Egyptian tortoise. <i>Egypt</i>
Philippine threatened monitor and sailfin lizards research and conservation program. <i>Philippines</i>	Understanding the role of physiology in reintroduction success: Stress and reproduction in reintroduced Canada lynx	Bottom-up and top-down effects in the Rocky Shores of the Galapagos Archipelago: Implications for marine reserve design and conservation. <i>Ecuador</i>	Conservation of the giant river turtle and the yellow spotted river turtle in the North Rupununi Wetlands, <i>Guyana</i>
Prediction of North America river otter parturition through progesterone levels from feces	Urine and fecal analysis along with PZP (Porcine Zona Pellucida) Titer testing	Breeding ecology and conservation of the vulnerable Vinaceous amazon and other cavity-nesting birds in the Atlantic forest. <i>Argentina, Brazil</i>	Conservation of <i>Trichechus manatus</i> in Panama's Caribbean Coast. <i>Panama</i>
Project Golden Frog/ Proyecto Rana Dorada. <i>Panama, United States, Costa Rica</i>	Using estrous cycle inhibition to improve artificial insemination in the clouded leopard	Bushmeat Crisis Task Force (BCTF). <i>Africa</i>	Descriptive epidemiology of captive slender-horned gazelle and gerenuk in the U.S.
Propagation of rare South Florida ferns and orchids	Wild Research	Butterfly Conservation Initiative	Descriptive epidemiology of mortality in Geoffroy's tamarins at Cleveland Metroparks Zoo
Propagation of the American hart's tongue Fern		Butterfly monitoring at Cleveland Metroparks Zoo and Brookside Reservation	Development of a mandrill tourism product in Lope National Park, <i>Gabon</i>
Protecting wild clouded leopards, fishing cats, and other carnivores in Thailand national parks. <i>Thailand</i>		Cercopithecine infant development	Dike 14 Nature Preserve Committee
Protection of the Sumatran rhino. <i>Indonesia</i>		Cheetah conservation and human impact in Kenya	Disease surveillance of Cleveland Metroparks deer herds
Reproductive assessment and sperm banking of wild black-footed cats in <i>South Africa</i>	Cleveland Metroparks Zoo		
Reproductive monitoring and captive breeding of the Sumatran rhinoceros	Analysis of snaring and poaching activities in Bwindi Impenetrable National Park. <i>Uganda</i>		
Reproductive senescence in the Pallas' cat	Andean bear distribution and status. <i>Peru, Bolivia</i>		
Role of hibernation in stimulating reproduction in captive temperate toads	Animal behavior observations towards board-certification in veterinary behavior		

2006 conservation projects

Disease threats to endangered African wild dogs: Information for conservation. <i>Africa</i>	Examining the relationship between fecal corticoids as a measure of stress and metabolic derangement on the onset of superficial necrolytic dermatitis in captive black rhinos	Kinabatangan Orang-Utan Conservation Project. <i>Malaysia</i>	Multi-institutional study of bachelor gorilla groups
Don Oso Project: Andean bear research, awareness, and protection		Lake Erie Allegheny Partnership for Biodiversity	Natural history and reintroduction of the Aneгада iguana. <i>British Virgin Islands</i>
Duetting behavior of Mueller's gibbon	Fauna survey and design of Campo Grande indigenous communal protected area. <i>Bolivia</i>	Lake Victoria Cichlid SSP (VSSP)	Northeast Ohio Butterfly Projects Database
Eastern plains garter snake conservation project	Feeding behavior of captive giraffe at Cleveland Metroparks Zoo	Land covers use by mantled howler and capuchin monkey troops (<i>Alouatta palliata</i> and <i>Cebus capucinus</i>) in an agroforestral landscape and local perceptions of farmers regarding the conservation of	Octopus behavior and exhibit use
Ecological processes affecting mara conservation in <i>Argentina</i>	Feline coronavirus: Epidemiology, pathogenesis, diagnosis, and immunity in non-domestic felids	primates in Esparza, <i>Costa Rica</i>	PAAZAB: International Membership. <i>South Africa</i>
Ecology and conservation status of the giant fish <i>Arapaima gigas</i> in the Rupununi wetlands of <i>Guyana</i>	Fossa behavior research project: Introduction of female to male	Length of the 2nd to 4th digit ratio (2D:4D) and its relationship to primate mating strategies and the emergence of human sociality	PASA
Ecology of Cinereous Vulture. <i>Mongolia</i>	Friends of Big Creek		Penninsular Pronghorn Traveling Suitcase for environmental education at El Vizcaino Biosphere Reserve School. <i>Mexico</i>
Effects of dietary resistant starch on cardiovascular parameters, colon health and the occurrence of regurgitation and reingestion in gorillas housed at Cleveland Metroparks Zoo	Functional biology of the primate feeding apparatus	Los Tuxtlas Biological Research Station. <i>Mexico</i>	Perceptions of animals in zoos: a study of visitor perception at Cleveland Metroparks Zoo and Zoo Atlanta
El Valle Amphibian Conservation Center. <i>Panama</i>	General Census of Orangutan Throughout Sabah, <i>Malaysia</i>	Madagascar Fauna Group. <i>Madagascar</i>	Peruvian Congress of Ornithology - White Winged Guan Workshop. <i>Peru</i>
Elephant exhibit renovation: a post-occupancy evaluation	Golden Frog Plush Toys: Project Golden Frog	Mating system and habitat selection of the White Tent Bat in <i>Costa Rica</i>	Population genetic markers for <i>Batagur baska</i>
Elephant Outreach Program: A Conservation Education Program. <i>Africa</i>	Gorillas analyze problem features using tools	Measuring awareness of zoo conservation programs among visitors	Preliminary characterization of hormonal cycles in a male and female fossa pair in captivity
Ethograms for flamingos	Habitat assessment for a threatened keystone marsupial in Patagonia. <i>Argentina, Chile</i>	Metapopulation genetics of the freshwater turtle <i>Podocnemis unifilis</i>	Preliminary study of serum concentrations of basic fibroblast growth factor (bFGF) and vascular endothelial cell growth factor (VEGF) in black rhinoceros, large cats (<i>Panthera spp.</i>) and bears (<i>Ursus spp.</i>) in health and disease
Evaluating visitor knowledge and attitudes toward chimpanzees at Cleveland Metroparks Zoo, Cleveland Museum of Natural History, and Great Lakes Science Center	Health and Habitat Survey of the Eastern Hellbender in Ohio and West Virginia	Mexican Wolf Reintroduction Project	Preliminary study of the HFE gene and its involvement in hemochromatosis in Egyptian fruit bats in comparison with the Rodriguez fruit bat
Evolution of the white face in white-faced sakis: testing the male-male competition hypothesis	HUTAN / Kinabatangan Orangutan Conservation Project- Sabah, <i>Malaysia</i>	Monarch Waystation Project	Preliminary study on the use of accelerometry to measure activity levels of captive African elephants and black rhinoceroses.
Evolutionary and phylogenetic considerations of primate facial expression musculature	International Snow Leopard Trust. <i>Asia</i>	Monitoring forest elephants to promote conservation in central Africa: poaching and patterns of elephant activity at bais. <i>Africa</i>	
	Investing in the future: sea turtle research and conservation project in the Paria Peninsula, Sucre State, <i>Venezuela</i>	Monitoring of fecal glucocorticoid metabolites and reproductive hormones in cheetahs at Cleveland Metroparks Zoo throughout separation and reintroduction of males and females	
	ISLT - Snow Leopard Traveling Display	Movement patterns, habitat preferences and phylogeography of the Armenian viper in <i>Armenia</i>	
	Jane Goodall Institute - Uganda, Kibale Education Vehicle. <i>Uganda</i>		
	Kibale Community Fuel Wood Project		

2006 conservation projects

Preliminary, prospective study on the efficacy of deferoxime treatment in combination with phlebotomy vs. phlebotomy alone for the treatment of hemochromatosis in Egyptian fruit bats	Retrospective study of the predictive value of total WBC, neutrophil count, and plasmfibrinogen in kangaroos and wallabies with inflammatory disease	Tropical rain forest fragmentation and the conservation of biodiversity: mammals, birds and dung beetles. <i>Mexico</i>	Asian Otter Survey Techniques and Population Monitoring Workshop, Royal Chitwan National Park. <i>Nepal</i>
ProDelphinus	Retrospective study on the seroprevalence and associated clinicopathologic data of wallaby retrovirus in North American zoos	Turtle Survival Alliance <i>Worldwide</i>	Assessment of basal endocrine and seminal traits in otters
Professional Development - AZA's Population Management Course: Fernando Angulo	RSID validation study- amylase membranes for salivary determination	Use of fecal markers in zoological parks	Bushmeat Crisis Task Force (BCTF). <i>Africa</i>
Professional Development: AZA's Amphibian Management School	Semen cryopreservation and <i>in vitro</i> fertilization in fishing cats	Using estrous cycle inhibition to improve artificial insemination in the clouded leopard	Butterfly Conservation Initiative
Project Golden Frog/ Proyecto Rana Dorada. <i>Panama, United States, Costa Rica</i>	Sex differences in testosterone concentration across primate taxa	Validation of solid-phase extraction methods of fecal material from captive and wild orang-utans	Cheetah Conservation Fund. <i>Namibia, Kenya, South Africa</i>
Rafetus Workshop: <i>China</i>	Sexual dichromatism in white-faced saki monkeys	Venezuelan CAP	Communications for Bonobo Conservation
Reintroduction of wild-born orphan chimpanzees: a new tool for conserving biodiversity in the Conkouati Reserve, Republic of <i>Congo</i>	<i>Sistrurus catenatus catenatus</i> movement and habitat use within a managed preserve in southwestern lower Michigan	Water Quality Testing - <i>Panama. Papua New Guinea</i>	Community Relations Officer for Forest Partners International
Reproductive biology and behavior of captive <i>Batagur baska</i>	Skeletal materials for teaching zoology laboratory exercises at Mount Union College	Website Construction: WIDECAST	Conservation education in pastoral communities: Educating teachers to enhance local understanding of human-wildlife interactions. <i>Kenya</i>
Retrospective study of Amazon River dolphin hematology and serum biochemistry values. <i>Venezuela</i>	Special Conservation Issue: Biodiversity Alliance	White-Winged Guan Project. <i>Peru</i>	Conservation of the endangered Egyptian tortoise. <i>Egypt</i>
Retrospective study of iron storage disease in captive Egyptian fruit bats at multiple institutions: characterization of histopathologic lesions and relationship to management factors	Sperm cryopreservation for IVF and embryo transfer in the fishing cat	Widecast	Conservation Starts with Education: Lola ya Bonobo Sanctuary. <i>Congo</i>
Retrospective study of pathologic findings of seahorses, seadragons, and pipefish (Syngnathidae) in captivity	Stereotypic behavior in female sunbears at Cleveland Metroparks Zoo	Wolf Awareness - Timber Wolf Alliance	Coral Reproduction: Hope for Future Generations
Retrospective study of pulmonary silicosis in birds housed on fine silics and substrate	Surveillance of exposure to avian influenza virus in selected bird species at Cleveland Metroparks Zoo	ZACC Travel Costs: Ravi Corea	Development of a health evaluation and monitoring program for captive propagation of mussels
Retrospective study of telazol, ketamine, and xylazine (TKX) anesthesiin highly uremic exotic cats	Tracking visitor behavior at the Regenstein Center for African Apes.	ZACC Travel: Joanna Alfaro	Development of an environmental teaching suitcase for northern Congo (Brazzaville). <i>Congo</i>
	Tree kangaroo conservation genetics	ZACC Travel: Sahdin Lias	Development of sex selection protocols for African and Asian elephant sperm
	Tree Kangaroo Conservation Program in <i>Papua New Guinea</i>	ZIMS Project	Eastern plains garter snake conservation project
	Tree kangaroo habitat assessment and conservation project <i>Australia</i>	Zoo fecal marker survey	Effects of selective logging on Malayan sun bears and bearded pigs in lowland tropical rainforests of <i>Borneo</i>
		Zoo visitors' social responses to animal exhibits	Financial support - International Rhino Foundation. <i>Asia, Africa</i>
		Zoos and Aquariums Committing to Conservation (ZACC)	General census of orangutan throughout Sabah, <i>Malaysia</i>
		Matabeleland Cheetah and Leopard Research Program. <i>Zimbabwe</i>	
		Columbus Zoo and Aquarium	
		ARCAS - Wildlife Rescue and Conservation Association. <i>Guatemala</i>	
		Aruba Island Rattlesnake Field Research. <i>Aruba</i>	

2006 conservation projects

Goualougo Triangle
Chimpanzee Project. *Congo*

Harpy eagle environmental
awareness

Human-Siberian tiger conflicts:
Training and working with
the tiger response team in
Russia

International Elephant
Foundation. *Africa, Asia*

International Iguana
Foundation. *Dominican
Republic, St. Lucia,
Jamaica, Grand Cayman*

International Snow Leopard
Trust. *Asia*

Kalaweit Association Gibbon
Sanctuary. *Borneo*

KEEP (Kakamega
Environmental Education
Project). *Kenya*

Kinabatangan Orang-Utan
Conservation Project.
Malaysia

Lake Victoria Cichlid SSP

Madagascar Fauna Group.
Madagascar

Manatee Rehabilitation
Partnership (MRP)

Marine Otters Conservation in
Peru

Mbeli Bai Gorilla Study. *Congo*

Mexican Wolf Reintroduction
Project

Mountain Bongo Repatriation
to Mount Kenya World
Heritage Site. *Kenya*

Natatuma Education and
Conservation Center in
Colombia

North American river otter
captive breeding study

Northern Rangelands Trust.
Kenya

Philippine threatened monitor
and sailfin lizards research
and conservation program.
Philippines

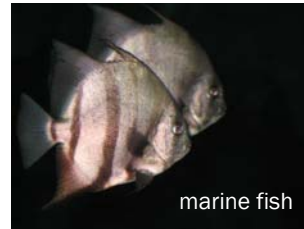
Philippines Biodiversity
Conservation Program
Education Coordinator.
Philippines

Project Golden Frog/ Proyecto
Rana Dorada. *Panama,
United States, Costa Rica*

Restoring conservation
capacity to Project *Pan
paniscus*. *Congo*

Schools Awareness Program,
Elephants in *Sri Lanka*

Seafood Watch



marine fish

SCORE - SEXual COral
REproduction workshop.
*United States, Puerto Rico,
Netherlands*

SCORE project. *United
States, Puerto Rico,
Netherlands*

Securing critical rangeland for
Grevy's zebra in northern
Kenya

Sex differences in testosterone
concentration across
primate taxa

Tree Kangaroo Conservation
Program in *Papua New
Guinea*

Tree kangaroo habitat
assessment and
conservation Project.
Australia

Veterinary interventions for
black rhino conservation in
Zimbabwe

Wider Caribbean Conservation
Network - WIDECAST

Wild Research

Wolf Awareness- Timber Wolf
Alliance

Toledo Zoological Gardens

Aruba Island rattlesnake field
research. *Aruba*

Assessing reproductive
parameters in captive kori
bustards using non-invasive
fecal hormone analysis

Biological samples from wild
Ricord's iguanas and wild
rhinoceros iguanas.
Dominican Republic

Butterfly Conservation Initiative

Conservation propagation of
the stony corals, Order
Scleractinia

Ecology and demography of
the Mona boa. *Puerto Rico*

Ecology of the Bimini boa on
Bimini, Bahama Islands.
Bahamas

Ecology of the Cuban boa on
the US Naval base,
Guantanamo Bay, *Cuba*

Great Lake piping plover
salvage captive rearing

Host plant selection in the
Mitchell's satyr butterfly

International Iguana
Foundation. *Dominican
Republic, St. Lucia,
Jamaica, Grand Cayman*

Lake Victoria Cichlid SSP
(VSSP)

Mark-recapture Studies of Oak
Openings Turtles

Ohio/ Michigan Wetland
Butterfly Initiative. *Congo*

Reintroduction of the Karner
Blue butterfly to the Oak
Openings of Northwestern
Ohio

Reintroduction of the Virgin
Island boa to the *US Virgin
Islands*

SE Michigan Karner blue
butterfly reintroduction

Status and distribution and
home range of the Eastern
fox snake in northwestern
Ohio.

Study of ant-caterpillar
relationships in the Karner
blue butterfly reintroduction
program

Urine and fecal analysis along
with PZP (Porcine Zona
Pellucida) titer testing

Wilds, The

Collection of African lion testes
for reproductive studies and
sperm banking

Development of
electroejaculation in the
Indian rhinoceros

Disease surveillance of
Cleveland Metroparks deer
herds

Early fetal sexing in the
rhinoceros

Establishment of baseline
urinalysis parameters in the
rhinoceros

Feeding behavior of captive
giraffe at Cleveland
Metroparks Zoo

Genetic relationship between
the two populations of
Indian rhinos in Assam
(India) and Nepal. *India,
Nepal*

Health and habitat survey of
the Eastern hellbender in
Ohio and West Virginia

Health assessments and
captive propagation of
hellbenders in Ohio, West
Virginia, and Pennsylvania

Sahara Conservation Fund.
*Algeria, Chad, Niger,
Ethiopia, Senegal*

Takin Ecology and
Conservation. *China*

Wild Research

OKLAHOMA

Oklahoma City Zoological Park

Basal reproductive biology of
the sand cat and black-
footed cat

Bowling for Rhinos - American
Association of Zoo Keepers

Bushmeat Crisis Task Force
(BCTF). *Africa*

Butterfly Conservation Initiative

Community conservation of
Grevy's zebra in northern
Kenya

Grevy's Zebra Scout Program

International Elephant Foundation. *Africa, Asia*

International Snow Leopard Trust. *Asia*

Lake Victoria Cichlid SSP (VSSP)

Madagascar Fauna Group. *Madagascar*

Northern Rangelands Trust. *Kenya*

Philippine threatened monitor and sailfin lizards research and conservation program. *Philippines*

Project Golden Frog/ Proyecto Rana Dorada. *Panama, United States, Costa Rica*

Securing critical rangeland for Grevy's zebra in northern *Kenya*

Sperm cryopreservation for IVF and embryo transfer in the fishing cat

Sunset Zoo/Asuncion Zoo - Sister Zoo Project. *Paraguay*

Tulsa Zoo and Living Museum

Asian elephant semen collection

Bowling for Rhinos - American Association of Zoo Keepers (AAZK)

Bushmeat Crisis Task Force (BCTF). *Africa*

Center for Ecosystem Survival - Conservation Parking Meter program

Cheetah Conservation Fund. *Namibia, Kenya, South Africa*

Development of sex selection protocols for African and Asian elephant sperm

Elephant Manager's Association Sponsor

Friends of the Australian Koala Foundation. *Australia*

IdeaWILD - 4 projects

International Elephant Foundation. *Africa, Asia*

International Snow Leopard Trust. *Asia*

ISLT - Conservation Education & Program Expansion in *Kyrgyzstan*

Jaguars in The Yucatan - Jaguar SSP. *Central America, South America*

Lake Victoria Cichlid SSP (VSSP)

Madagascar Fauna Group. *Madagascar*

Mountain bongo repatriation to Mount Kenya World Heritage Site. *Kenya*

Observation and analysis of mating behavior of Asian elephants and associated endocrine analysis

Pan African Sanctuaries Alliance. *Africa*

Rainforest Restoration Foundation. *Ecuador*

Thick-billed Parrot SSP: Project Support

Utilization of endocrine analysis to investigate estrous synchronization in the female Asian elephant

OREGON

Oregon Coast Aquarium

Butterfly Conservation Initiative

MIRP (Impact of a visit to a zoo or aquarium)

Sea otter conservation endocrinology

Oregon Wildlife Foundation

Mountain Bongo Repatriation to Mount Kenya World Heritage Site. *Kenya*

Status Assessment of Wildlife in the Ogaden Region of *Ethiopia*

Oregon Zoo

Analysis of reproductive hormones in mongoose lemurs

Butterfly Conservation Initiative

Conservation education in pastoral communities: educating teachers to enhance local understanding of human-wildlife interactions. *Kenya*

Development of gamete cryopreservation technology

Humboldt penguin conservation - *Peru*

International Snow Leopard Trust. *Asia*

Matabeleland Cheetah and Leopard Research Program. *Zimbabwe*

Maternal behavior and ontogeny of behavior in black rhinoceros

Minimising the conflict between Asian elephants and local villagers. *Sri Lanka*

Northern Rangelands Trust. *Kenya*

Peninsular Pronghorn Recovery Project

Rodrigues Environmental Educator. *Rodrigues Island*

Schools Awareness Program, Elephants in *Sri Lanka*

Seafood Watch

Securing critical rangeland for Grevy's zebra in northern *Kenya*

Silverspot Butterfly Conservation Project

Tree Kangaroo Conservation Program in *Papua New Guinea*

Tree kangaroo habitat assessment and conservation project. *Australia*

Western Pond Turtle Recovery Project

Wild Research

PENNSYLVANIA

Elmwood Park Zoo

Mid-Atlantic Conservation Alliance

Erie Zoo

Amphibian TAG support

Basal reproductive biology of the sand cat and black-footed cat

Cheetah SSP

Conservation Endowment Fund - Contributions

Financial Support - International Rhino Foundation. *Asia, Africa*

Jaguars in The Yucatan- Jaguar SSP. *Central America, South America*

Pacaya-Samiria National Reserve, *Peru*

Polar Bears International (PBI). *Russia, North America, Norway*

Tamarack Wildlife Rehabilitation Center

Tigris Foundation. *Russia*

Wild Wings Rehabilitation Center

Lehigh Valley Zoo

Mid-Atlantic Conservation Alliance

National Aviary

Red-crowned Crane Reintroduction

Seafood Watch

Philadelphia Zoo

Andean bear research, awareness, protection, and compensation plan

Behavioral responses of captive squirrel monkeys

Belize Zoo Conservation Program. *Belize*

2006 conservation projects

Botswana Predator Conservation Program. *Botswana*

Bushmeat Crisis Task Force (BCTF). *Africa*

Caribbean flamingo ecology and wetland conservation in coastal Yucatan, *Mexico*

Cheetah Conservation Fund. *Namibia, Kenya, South Africa*

Community Relations Officer Program

Conservation and study of reintroduced scarlet macaws

Conservation of three endangered turtles

Conservation status of the Cozumel thrasher and the role of exotic snakes in its decline

Cryptobranchid Interest Group

Diamondback Terrapin Head Start Program

Docent Council Projects

Ecology conservation and management of the Central African dwarf crocodile. *Africa*

El Valle Amphibian Conservation Center. *Panama*

Endangered Primate Rescue Center/Cuc Phuong National Park, *Vietnam*

Epulu Okapi Project

Estimating Andean condor populations in the Apolobamba Range of western *Bolivia*

Financial support - International Rhino Foundation. *Asia, Africa*

Golden lion tamarin behavioral research

International Snow Leopard Trust. *Asia*

Jaguar Conservation and Monitoring in western *Belize*

Junior Zoo Apprentice Program Habitat Restoration Project

Komodo Dragon SSP Conservation Fund. *Indonesia*



Laikipia Predator Project. *Kenya*

Madagascar Fauna Group

Mexico Jaguar Project. *Mexico*

Micronesian kingfisher husbandry research

Mid-Atlantic Conservation Alliance

MIRP (Impact of a visit to a zoo or aquarium)

Okavanga Botswana Wild Dog Research Project. *Botswana*

Polar Bears International (PBI). *Russia, North America, Norway*

Population recovery program for the Central American river turtle. *Mexico*

Problem Jaguar Rehabilitation Program. *Belize*

Protection of giant otters. *Brazil*

Rodrigues Environmental Educator. *Rodrigues Island*

Rodrigues Fruit Bat Conservation Project. *Rodrigues Island*

Sahara Conservation Fund. *Algeria, Chad, Niger, Ethiopia, Senegal*

Samburu-Laikipia Wild Dog Project. *Africa*

Save The Tiger Fund. *Asia*

Schools Awareness Program, Elephants in *Sri Lanka*

Short-nosed echidna ecology. *Australia*

Tigris Foundation. *Russia* Translocation and Reintroduction of Bicolored Tamarins. *Brazil*

Tree Kangaroo Conservation Program in *Papua New Guinea*

Tsunami rehabilitation and reconstruction trust

Wild Science, Butterflies for Education

Zoo and Aquarium Teen Program Assessment Consortium (ZATPAC)

Pittsburgh Zoo & PPG Aquarium

American burying beetle recovery program

Behavior and communication of translocated elephants in *South Africa*

Behavioral effects of the death of a silverback on a bachelor and mixed-sex group

Behavioral endocrinology, ecology and conservation of the rare gelada baboon in the Menz Highlands, *Ethiopia*

Building conservation leadership in the Namunyak Wildlife Conservation Trust Environmental Committee, *Kenya*

Capacity building through staff exchanges between the Pittsburgh Zoo & PPG Aquarium and the Kakamega Environmental Education Program (KEEP), and the Wuppertal Zoo

Conservation of spectacled bears and their cloud forest and paramo habitat in *Ecuador*

Conserving endangered African wild dogs outside formally protected areas. *Africa*

Coral Propagation

Coral skeletal density study based on the feeding of nauplii

Determining the remaining range of the Massasauga rattlesnake

Development of a telemetry package to record GPS location, temperature, and vocalizations of free-ranging elephants.

Development of a training technique for tamarin infant carrying to enhance genetic diversity in the cotton-top tamarin SSP Population

Development of sex selection protocols for African and Asian elephant sperm

East African Otter Project: bridging education and research *Kenya*

Effect of human touch on the heart rate of captive African elephants

Effectiveness of Deslorelin Implants for Controlling Intermale Aggression in *Mandrillus sphinx*

Establishing community based reforestation in *Madagascar*

Evaluation of the pharmacokinetics/pharmacodynamics of orally administered ivermectin in African elephants

Evolution of the white face in white-faced sakis: testing the male-male competition hypothesis

Examination of bushmeat consumption inside the Conkouati National Park, *Congo*

General census of orangutan throughout Sabah, *Malaysia*

Health assessments and captive propagation of hellbenders in Ohio, West Virginia, and Pennsylvania

Hellbender biological survey



2006 conservation projects

KEEP (Kakamega Environmental Education Project). *Kenya*

Kinabatangan Orang-Utan Conservation Project. *Malaysia*

Lake Victoria Cichlid SSP (VSSP)

Long-term primate community monitoring, temporal changes in colobus monkey demography, and colobus monkey infant care patterns in an East African rain forest. *Africa*

Modeling the ecological basis of human - hippopotamus conflict.

Natural history and reintroduction of the Aneгада iguana. *British Virgin Islands*

Owl/Rodent Project

Pan African Sanctuary Education Workshop. *Africa*

Perception & categorization by the cotton-top tamarin

Phylogeography of the Fijian archipelagos: opportunities for conservation and capacity building. *Pacific Ocean*

Pittsburgh Zoo & PPG Aquarium/Tshwane University of Technology scholarship program

Population dynamics of lions in the Samburu / Buffalo Springs / Shaba ecosystem in *Kenya*

Protected Patches: Farmers and primates around Cyamundongo Forest, *Rwanda*

Research on migration of endangered Tibetan antelope and community involvement in their conservation

Role undergrowth species in the Acanthaceae family play in inhibiting the regeneration of trees at Isecheno. *Kenya*

Seafood Watch

Thermal management by elephants

Tree Kangaroo Conservation Program in *Papua New Guinea*

Tree Kangaroo Habitat Assessment and Conservation Project. *Australia*

Wild bongo surveillance program in Aberdares and Mt. Kenya National Parks. *Kenya*

ZOOAMERICA North American Wildlife Park

Bird Boxes

Campaign for ISIS, Building ZIMS

ZIMS

RHODE ISLAND

Roger Williams Park Zoo

American burying beetle captive propagation and reintroduction program

American burying beetle recovery program

Asian Elephants GPS Movement Study, *Malaysia*

Biological control of purple loosestrife

Butterfly Conservation Initiative

Conservation genetics of the parma wallaby

Development and identity of sexually dimorphic reproductive signals and responses by African elephants

Giant anteaters on the Rupununi Savannas of *Guyana*

International Bug Club: *Papua New Guinea*

Inventory, distribution and conservation action of the critically endangered

Philippine forest turtle, Palawan, *Philippines*

Involving teachers and small producers to develop community support for conservation of the golden lion tamarin in Rio de Janeiro State, *Brazil*

Karner blue butterfly recovery implementation plan. Part of the Butterfly Conservation Initiative: Partnerships for Recovery

Kibale Community Fuel wood Project

Mexican Wolf Reintroduction Project

New England Zoo and Aquarium Conservation Collaborative

Restoring cheatgrass-degraded sagebrush steppe systems: The interaction of ant foraging behavior, seed pools, and restoration management initiatives

RI state significant Upland and Early successional habitat restoration "Joslin Farm Project"

Rodrigues Environmental Educator. *Rodrigues Island*

Tree Kangaroo Conservation Program in *Papua New Guinea*

Tree Kangaroo Habitat Assessment and Conservation Project. *Australia*

Brookgreen Gardens

Assessment of basal endocrine and seminal traits in otters

Bushmeat Crisis Task Force (BCTF). *Africa*

Ripley's Aquarium

Apex Predator Tagging Study

Assessment and treatment of ophthalmic abnormalities in stranded sea turtles

Beach Sweep

Comparison of sea turtle thrombocyte aggregation to human platelet aggregation in whole blood

Earth Day Celebration

Mycobacterial infections in sea dragons

Necropsy techniques and pathological lesions of sea turtles

Plasma chemistry database for sand tiger sharks

Sandtiger shark spinal studies



Sea turtle reproductive physiology

Splash for Trash

Wildlife Conservation Society: Seasonal movement patterns of sand tiger sharks in the western *Atlantic Ocean*

Riverbanks Zoo & Garden

Basal reproductive biology of the sand cat and black-footed cat

Humboldt penguin ecology and health research initiative in *Chile*

Project Golden Frog/ Proyecto Rana Dorada. *Panama, United States, Costa Rica*

Tree Kangaroo Conservation Program in *Papua New Guinea*

Tree kangaroo habitat assessment and conservation Project. *Australia*

Wild Research

**SOUTH
CAROLINA**

**South Carolina
Aquarium**

Diamondback terrapin conservation and education

International Migratory Bird Day

Investigation of a previous unknown relationship between loggerhead sea turtles and a flagellate

Loggerhead turtle pit tag study

Oceans and human health lecture series

Patterns of antibiotic resistance in bacteria isolated from marine turtles

Robust redhorse conservation committee

Sea turtles in the classroom - an activity guide correlated to South Carolina state education standards

South Carolina Aquarium sea turtle rehabilitation program

South Carolina Oyster Restoration and Enhancement Program

South Carolina Phytoplankton Monitoring Network

Sustainable Seafood Initiative

Bramble Park Zoo

Minnesota Trumpeter Swan Restoration Program

**Great Plains Zoo &
Delbridge Museum**

Bowling for Rhinos - American Association of Zoo Keepers (AAZK)

International Snow Leopard Trust. *Asia*

TENNESSEE

**Chattanooga Zoo at
Warner Park**

Conservation Endowment Fund

Patrick Jones Memorial Scholarship/Andean Bear Project

Proyecto Conservacion Condor Andino. *South America*

Rainforest Meter. *South America*

**Knoxville Zoological
Gardens**

Analysis of Flight Calls

Assessment of basal endocrine and seminal traits in otters

Banding and netting of birds at Knoxville Zoological Gardens, Great Smokey Mountains National Park, and Seven Islands Wildlife Refuge.

Bog Turtle *in situ* project

Conservation Endowment Fund

Financial Support of the Conservation Breeding Specialist Group (CBSG)

Foothills Land Conservancy

Madagascar Fauna Group. *Madagascar*

Mass vaccination of Grevy's zebra against anthrax in northern *Kenya*

Nocturnal Behaviors in Captive Black Bears

Northern Rangelands Trust. *Kenya*

Operation Migration

Pan African Sanctuaries Alliance. *Africa*

Securing critical rangeland for Grevy's zebra in northern *Kenya*

Sex differences in testosterone concentration across primate taxa

Study of the reproductive ecology of the timber rattlesnake in two high elevation rookeries of western North Carolina

Temperature-dependent sex determination study in four chelonian species

Memphis Zoo

Analysis of reproductive hormones in mongoose lemurs

Applications of infrared thermography for the physiological monitoring of captive wildlife

Association of reproductive hormonal profiles to behaviors associated with estrus and pregnancy. *China*

Census and analysis of Louisiana pine snake and Bairds pocket gopher populations as a management tool for habitat conservation

Contribute to the establishment of a wet chemistry database regarding the nutrient composition of different species of (or cultivars) of bamboo consumed by giant pandas by bamboo species and plant part

Cryobanking Memphis Zoo's genetic resources: Wildlife Conservation for the Future?

Detection of reproductive hormone mimics in bamboo: A three-pronged approach to determining the presence of cross-reacting Phytosterols and estimating their physiological relevance to giant panda ecology.

Development of a model to understand the nutritional requirements of the giant panda

Development of new technologies for conservation of endangered amphibians

Developmental effects of climate on the lion's mane

Donation to Memphis Zoo's Conservation Programs

Ecology and conservation of jaguars and pumas in Emas National Park and surrounding farmlands. *Brazil*

Estrous cycle monitoring and artificial insemination in giant pandas

Experimental repatriation of box turtles in a fragmented urban habitat

Feline coronavirus: Epidemiology, pathogenesis, diagnosis, and immunity in non-domestic felids

Lake Victoria Cichlid SSP (VSSP)

Mariana Avifauna Conservation Program: Phase One. *Commonwealth of N. Maryannas Islands*

Marianas Avifauna Conservation. *Commonwealth of N. Maryannas Islands*

Nutritional analysis of bamboo consumed by giant pandas

Quantification of bamboo handling time and selection by giant pandas: roles of nutritional content, energetics and seasonality

Recycling of cell phones and used batteries

Regeneration of the giant panda's bamboo forest in bamboo die-off zones. *China*

Remote physiological monitoring of the giant panda using urinary and fecal hormonal assays in combination with nutritional infrared reflectance spectroscopy (NIRS) profiling

Research and monitoring of bamboo as main food of giant panda. *China*

Research on adaptation of giant panda for different habitat pattern in Qinling Mountain. *China*

Restoration of giant panda habitat: A multidisciplinary approach to providing technical assistance in *China*

Role of energetics in the maintenance and breeding of the giant panda

Seafood Watch

Seasonal histochemical and nutritional characteristics of bamboo consumed by giant pandas

Sino-US Forest Health and Restoration Project: Sino-US Forester Exchange Tour

Use of laparoscopic sterilization in female African elephants as a method of population control in free ranging elephant herds. *Africa*

Using stable isotopes to characterize the diet of black bears in Great Smokey Mountains National Park

Nashville Zoo, Inc.

Feline coronavirus: Epidemiology, pathogenesis, diagnosis, and immunity in non-domestic felids

International Tapir Symposium. *Argentina, South America*

Using estrous cycle inhibition to improve artificial insemination in the clouded leopard

Ripley's Aquarium of the Smokies

Adopt - The - Spur

Apex Predator Tagging Study

Earth Day Festival

Mycobacterial infections in sea dragons

Necropsy techniques and pathological lesions of sea turtles

Plasma chemistry database for sand tiger sharks

Sea turtle reproductive physiology

Wildlife Conservation Society: Seasonal movement patterns of sand tiger sharks in the western *Atlantic Ocean*

TEXAS

Abilene Zoological Gardens

Attwater's Prairie Chicken Recovery Program

Butterfly Conservation Initiative

Chaco Center for Conservation and Research. *Paraguay*

Detection of fetal gender differences in maternal serum progesterone concentrations of Asian elephants

International Snow Leopard Trust. *Afghanistan, Bhutan, China, India, Mongolia, Nepal, Russia, Kazakhstan, Pakistan, Kyrgyz Republic, Tajikistan, Uzbekistan*

Restoration of bald eagle nesting site

Aquarium & Rainforest at Moody Gardens, Inc.

Birdwatching 101/201

El Valle Amphibian Conservation Center. *Panama*

Lake Victoria Cichlid SSP (VSSP)

Municipal landscape recycling project

Sea Turtle Rehabilitation

SCORE - SEXual CORal REproduction workshop. *United States, Puerto Rico, Netherlands*

Tchimounga Roots & Shoots Youth Campaign. *Congo*

Texas Marine Mammal Stranding Network

Caldwell Zoo

Early fetal sexing in the rhinoceros

East Texas black bear task force

Evolution and conservation of *Cercopithecus* species

Feline coronavirus: Epidemiology, pathogenesis, diagnosis, and immunity in non-domestic felids

International Elephant Foundation. *Africa, Asia*

Mexican Wolf Reintroduction

Range of the Jaguar and Guyana Conservation Partnership Links. *Guyana*

Cameron Park Zoo

Chaco Center for Conservation and Research. *Paraguay*

Dallas World Aquarium, The

Assessment of basal endocrine and seminal traits in otters

Butterfly Conservation Initiative

Conservation Endowment Fund

Construction of marine mammal rehabilitation center, Ciudad Bolivar, *Venezuela*

Contribution to The Ocean Project

Coral Reef and Rainforest Parking Meter Program

International Migratory Bird Day

Marvin Jones Memorial Fund

Project Summit. *Panama*

Puerto Rican Parrot Recovery Program. *Puerto Rico*

Seafood Watch

Three-toed Sloth Rehabilitation Center. *Costa Rica*

Turtle Survival Alliance. *Worldwide*

World Ocean Day Celebration

Dallas Zoo

Anegada iguana - monitoring blood chemistry values. *British Virgin Islands*

Assessing reproductive parameters in captive kori bustards using non-invasive fecal hormone analysis

Assisted reproduction using sex-sorted sperm: A management strategy for captive gorillas

Bonobo - collection and cryopreservation of semen

Brazilian Ocelot Consortium. *Brazil, United States*

Bushmeat Crisis Task Force (BCTF). *Africa*

Community conservation of Grevy's zebra in northern *Kenya*

Cryptobranchid Interest Group

Developmental effects of climate on the lion's mane

DNA Bank

Dominance behavior of Chilean flamingos

Ecology of the Texas rat snake

Effects of captive environment on varanid lizards

El Valle Amphibian Conservation Center. *Panama*

Ethograms for flamingos

Flamingo reference database

Foraging behavior of naive, neonatal black-throated monitors, *Varanus albigularis*

Great Lake piping plover salvage captive rearing

Grevy's Zebra Scout Program

Growth of Okapi

Individual identification of native Texas Salamanders

International Iguana Foundation. *Dominican Republic, St. Lucia, Jamaica, Grand Cayman*

2006 conservation projects

Maternal behavior and ontogeny of behavior in black rhinoceros	Spatial learning in the Haitian giant galliwasp	Donate-a-Phone Project to aid Sumatra's Tesso Nilo's elephants & their ecosystem. <i>Sumatra</i>	Outside Research, Conservation and Science Endeavors of El Paso Zoo Staff
Monitor Lizards: Restoring Vitamin D by dietary sources or UV-B light	Stress in Okapi	Earth Day at the Zoo	Pachyderm Press: El Paso Zoo Staff & Volunteer E-Newsletter
Natural history and reintroduction of the Anegada iguana. <i>British Virgin Islands</i>	Vocalizations of Chilean and American flamingos	El Paso Zoo participation in AZA Conservation Programs	Partner in the National Audubon Society's Great Backyard Bird Count Event
Natural history of American flamingos	Vocalizations, hormones, and behavior of Asian small-clawed otters	El Paso Zoo signing of the Marine Aquarium Council's Certification Program "Declaration of Support"	Passport to the El Paso Zoo Pamphlet & DVD Project
Natural history of raptors in northern <i>Mexico</i>	Wattled Crane - artificial insemination	El Paso Zoo TV	Provision of samples: Malayan tapir hormonal analysis and Elephant endotheliotropic herpes virus (EEHV) testing
Natural history of small carnivores in northern <i>Mexico</i>	Wildlife Research Expeditions	El Paso Zoo's Computer Conservation Center	Thick-billed Parrot SSP: Project Support
Northern Rangelands Trust. <i>Kenya</i>	El Paso Zoo American Association of Zoo Keepers Project: Rainforest Conservation Parking Meter	Elephant Conservation Weekend	Volunteer Conservation Efforts via exhibit hosting and off-site programs
Nutrition of Ocelot Diets	Animal Corps Youth Initiative Project	Elephant donation device for conservation fund donations	Water Conservation
Ocelot Translocation in Chiapas, <i>Mexico</i>	Biospecimen Provision	Elephant Walk Self-Guided Tour Pamphlet Project	Wildlife Rehabilitation Support
Ocelot translocation study. <i>Canada, United States</i>	Black-footed Ferret Waystation	Endangered Species Poster Project	"World of the Sea Lion" - touch screen computer kiosk for conservation
Pair bonds of flamingos in captivity	Brazilian Ocelot Consortium. <i>Brazil, United States</i>	Financial support of Orangutan Foundation International	Zambian Children's Book Project
Philippine threatened monitor and sailfin lizards research and conservation program. <i>Philippines</i>	Bugfest at the Zoo Event	Financial support of the Conservation Breeding Specialist Group (CBSG)	Ellen Trout Zoo Developmental effects of climate on the lion's mane
Population biology of the interior least tern	Checklist of the birds of Keystone Heritage Park	Financial support of the local Audubon group's Birdathon endeavors	East Texas black bear task force
Reproductive biology of Texas spring salamanders	Chihuahuan Desert Education Coalition. <i>Mexico, United States</i>	Financial support of the Zoo Conservation Outreach Group	Fort Worth Zoological Park Attwater's Prairie Chicken Recovery Program
Reproductive biology of the brown tree snake	Chihuahuan Desert Fiesta Event organizer/participant	Formation of a Roots and Shoots Chapter	Cryptobranchid Interest Group
Responses of two anteater species to ant- and termite-related odors	Citizen and Institutional Recycling Efforts	Guided tours of the Zoo's Asian animal area	Development of PopLink software
Responses of two gallinaceous bird species to ant-related odors	Conservation Endowment Fund - Contributions	Habitat for Wildlife Weekend	Development of sex selection protocols for African and Asian elephant sperm
Saddle-billed Stork Reproductive Biology	Conservation Page of the Zoo's Map	Ibu's "Art to Help Orangutans" Project	Early fetal sexing in the rhinoceros
Salamander - Effect of Water Chemical Parameters on Ovaposition	Conservation Summer Camp for Children	International Migratory Bird Day	Eastern bongo repatriation. <i>Kenya</i>
Seafood Watch	Contributor to the AZA Elephant TAG/SSP's Elephant Exhibit Design resource	IUCN/SSC Tapir Specialist Group	Effects of captive environment on varanid lizards
Securing critical rangeland for Grevy's zebra in northern <i>Kenya</i>	Creation of Conservation Action Links on Zoo Web site	National Wolf Awareness Event at the Zoo	
	Distribution of Asian Elephant Biology & Conservation Teaching Tools to Educators	On-site animal programs for guests, on Asian elephant and Marine mammal conservation	

2006 conservation projects

Feline coronavirus:
Epidemiology, pathogenesis,
diagnosis, and immunity in
non-domestic felids

Financial Support -
International Rhino
Foundation. *Asia, Africa*

Foraging behavior of naive,
neonatal black-throated
monitors, *Varanus*
albigularis

Genetic relationship between
the two populations of
Indian rhinos in Assam
(India) and Nepal. *India,*
Nepal

International Elephant
Foundation. *Asia*

International Iguana
Foundation. *Dominican*
Republic, St. Lucia,
Jamaica, Grand Cayman

International Workshop on ex
situ eagle management and
conservation

Madagascar Fauna Group.
Madagascar

Mountain bongo repatriation to
Mount Kenya World
Heritage Site. *Kenya*

Natural history and
reintroduction of the
Anegada iguana. *British*
Virgin Islands

Natural history of American
flamingos

Nutritional study

Public/private partnership to
understand and conserve
jaguar habitat in the
Yucatan. *Mexico*

Puerto Rican crested toad
reintroduction and recovery
efforts. *Puerto Rico*

Quantifying the nutritional and
captive environment for
Grand Cayman iguanas

Restoration of bald eagle
nesting site

Turtle Survival Alliance.
Worldwide

Fossil Rim Wildlife Center

Assistance to IRF Rhino
Conservation Medicine
Program

Attwater's Prairie Chicken
Recovery Program

Cervid genetic sample
collections

Determination of oocyte
activity in aging female
cheetah.

Financial Support -
International Rhino
Foundation. *Asia, Africa*

Maternal behavior and
ontogeny of behavior in
black rhinoceros

Mexican Wolf Reintroduction
Project

Nutritional Study

Gladys Porter Zoo

Assisted reproduction using
sex-sorted sperm: A
management strategy for
captive gorillas

Financial support -
International Rhino
Foundation. *Asia, Africa*

International Iguana
Foundation. *Dominican*
Republic, St. Lucia,
Jamaica, Grand Cayman

Quantifying the nutritional and
captive environment for
Grand Cayman iguanas

Sea turtle rehabilitation

Tree Kangaroo Conservation
Program in *Papua New*
Guinea

Tree kangaroo habitat
assessment and
conservation project.
Australia

Houston Zoo, Inc.

Aruba Island Rattlesnake Field
Research. *Aruba*

Asian otter survey techniques
and population monitoring
workshop, Royal Chitwan
National Park. *Nepal*

Attwater's Prairie Chicken
Recovery Program

Bat Conservation International.
Canada, United States

Bat Surveys: Waugh Drive
Bridge



Belize Zoo Veterinary Training
Program. *Belize*

Bushmeat Crisis Task Force
(BCTF). *Africa*

California Condor Recovery
Project: Rear and prepare
for release to the wild

Chelonian Research Institute
Support Program

Conservation and Ecology of
the Grey-shanked Douc
Langur in Kong Ka Kinh
National Park, Gia Lia
Province, *Vietnam*

Conservation of maned wolf in
Brazilian Cerrado. *Brazil*

Developmental Effects of
Climate on the Lion's Mane

East Texas Black Bear Task
Force

El Valle Amphibian
Conservation Center.
Panama

Elepaio Conservation: Pia
Valley Rodent Control
Program.

Financial Support -
International Rhino
Foundation. *Asia, Africa*

Grand Cayman Blue Iguana
Recovery Program Grand
Cayman

Grevy's zebra: Emergency
Response to Anthrax
Outbreak in *Kenya*

Gunung Pulung Orangutan
Conservation Project.
Indonesia

Husbandry and training
programs for the Summit
Nature Park, Panama City,
Panama

International Iguana
Foundation. *Dominican*
Republic, St. Lucia,
Jamaica, Grand Cayman

International Migratory Bird
Day

International Tapir Symposium.
Argentina, South America

IUCN/SSC Tapir Specialist
Group

Jaguars and wolves of Brazil's
Grasslands: Carnivore
ecology and conservation.
Brazil

Kinabatangan Orangutan
Conservation Program.
Malaysia

Koala Conservation Project.
Australia

Lateral trunk bias in the
African Elephant

Lemurs: Behavioral ecology of
the remaining black-and-
white ruffed lemurs
following catastrophic
habitat destruction at
Manombo Special Reserve.
Madagascar

Mariana Avifauna Conservation
Program: Phase One.
Commonwealth of N.
Maryannas Islands

Marianas Avifauna
Conservation.
Commonwealth of N.
Maryannas Islands

Mass vaccination of Grevy's
zebra against anthrax in
northern *Kenya*

Mexican herpetological
surveys. *Mexico*

Mountain bongo repatriation to
Mount Kenya World
Heritage Site. *Kenya*

Mountain tapir ecology in
Colombia. *Colombia*

North American river otter
latrine site surveys

Northern Rangelands Trust.
Kenya

VIRGINIA

Mill Mountain Zoo

- Adopt A Street
- America Recycles Day
- Annual Clean Valley Council Earth Summit
- Association of Energy Conservation Professionals Green Living and Energy Expo
- Center for Ecosystem Survival Conservation Parking Meter. *Costa Rica, Dominican Republic, Guatemala, Central America, South America, Indonesia, Belize*
- Educational zoo programming
- Fishing Cat SSP fundraising
- Great Backyard Bird Count
- International Migratory Bird Day
- International Snow Leopard Trust. *Asia*
- Kids Fishing Carnival
- Mill Mountain Zoo Conservation Programs Support
- Natural Partnerships Program
- Provision of biological specimens (blood, feathers, hair, etc.) for USFWS Forensics Laboratory standards collection
- Recycling program
- Roanoke Valley Bird Club bluebird trail monitoring
- U.S.G.S. Breeding Bird Survey
- Virginia Department of Game and Inland Fisheries Wildlife Mapping
- Virginia Wildlife and Birding Trail

NZP Conservation & Research Center

- Collection of African Lion testes for reproductive studies and sperm banking

Determination of estrous cyclicity, pregnancy and/or seasonality patterns in African Lions

Virginia Aquarium & Marine Science Center

- Evaluation of marine mammal strandings for signs of human interactions
- Gross and histological examination of fresh dead sea turtles in Virginia
- Improving sea turtle stranding response on Virginia's eastern shore
- Marine mammal and sea turtle stranding response
- North Atlantic right whale stranding response
- Plasma chemistry database for sand tiger sharks
- Recovery and treatment of live stranded marine mammals in Virginia
- Satellite tracking of a rehabilitated loggerhead sea turtle
- Sea turtle assistance for Whelk Pot Survey
- Sea turtle reproductive physiology
- Seafood Watch
- Supporting response to dead marine mammal strandings in Virginia

Virginia Zoological Park

- Butterfly Conservation Initiative
- International Tapir Symposium. *Argentina, South America*
- Mountain bongo repatriation to Mount Kenya World Heritage Site. *Kenya*

WASHINGTON

Northwest Trek Wildlife Park

- GnRH Bison Study
- Training and use of scat detection dogs for field population studies

Point Defiance Zoo & Aquarium

- Backyard Buggin'
- Blue-throated macaw conservation project. *Bolivia*
- Developing conservation response units in *Sumatra*
- Madagascar Fauna Group. *Madagascar*
- Project Seahorse
- Red Wolf genome resource banking
- Saving Panama's Amphibians. *Panama*
- Sea otter conservation endocrinology
- Seafood Watch
- Southeast Asia Wild Cat Education Initiative. *Thailand, United States*
- Sumatran Tiger Conservation Program *Indonesia*
- Tree kangaroo conservation program in *Papua New Guinea*

Seattle Aquarium

- Alcid (sea bird) reproductive physiology
- Giant Pacific octopus reproductive and stress related hormones
- Larval rearing of Puget Sound teleosts
- Leafy sea dragon endocrinology
- Leafy sea dragon population genetics

Loss of Genetic Diversity in Sea Otters Associated with the Fur Trade of the 18th and 19th Centuries

- Neah Bay reef video survey
- Northern sea otter pup rehabilitation
- Population genetics of onchoteuthid squid *Moroteuthis* found within Puget Sound
- River otter fecal testosterone
- Sea otter conservation endocrinology
- Sea otter population genetics
- Sea turtle rehabilitation
- Seafood Watch
- Sixgill shark diver sighting database
- Sixgill shark population genetics
- Sixgill shark acoustic tagging
- Sixgill shark visual marker tagging
- Washington sea otter annual census

Woodland Park Zoo

- Aruba Island Rattlesnake Field Research. *Aruba*
- AWF Graduate Student Support and Capacity Building
- AZA-endorsed SSP / TAG Projects - WPZ Conservation and Education Grants
- Borderlands Jaguar Detection Project
- Botswana Predator Conservation Program. *Botswana*
- Butterfly Conservation Initiative
- Conservation Endowment Fund - contributions
- Education Center in Tapoh Village, Ruso District, Narathiwat Province, southern *Thailand*

2006 conservation projects

Effects of selective logging on Malayan sun bears and bearded pigs in lowland tropical rainforests of *Borneo*

Fecal steroids in Matschie's tree kangaroo

Grizzly Bear Outreach Project

Hornbill nest adoptions in *Thailand*

Indonesian Veterinary Training Program

International Bug Club: *Papua New Guinea*

International Migratory Bird Day

International Snow Leopard Trust. *Asia*

International Tapir Symposium. *Argentina, South America*

Kibale Community Fuel wood Project

Licton Springs Conservation and Restoration Project

Madidi Jaguar Project. *Bolivia*

Mbeli Bai Gorilla Study. *Congo*

Monitoring jaguar in the Cockscomb Basin Wildlife Sanctuary. *Belize*

Muraviovka Park for sustainable land use. *Russia*

Naturalia Jaguar Project. *Mexico*

Okavanga Botswana Wild Dog Research Project. *Botswana*

Orangutan habitat protection and patrolling in Gunung Palung National Park. *Indonesia*

Partnerships for the World: International Field Training Programs in Conservation Biology

Project Golden Frog/ Proyecto Rana Dorada. *Panama, United States, Costa Rica*

Raptor Ecology of the Shrub-Steppe (formerly Ferruginous Hawk Satellite Tracking Study)

Rodrigues Environmental Educator. *Rodrigues Island*

Schools Awareness Program, Elephants in *Sri Lanka*

Silverspot Butterfly Conservation Project

Tarangire National Park Elephant Project. *Tanzania*

Tree kangaroo conservation genetics

Tree Kangaroo Conservation Program in *Papua New Guinea*

Tree kangaroo habitat assessment and conservation project. *Australia*

Western Pond Turtle Recovery Project

Wildlife and People in Kenya: Waterholes Project. *Kenya*

Zoo and Aquarium Teen Program Assessment Consortium (ZATPAC)

WEST VIRGINIA

Oglebay's Good Zoo

Bald eagle feather donation

Bird rehabilitation

Cell phone recycling

Conservation Endowment Fund

Financial support of the Conservation Breeding Specialist Group (CBSG)

Participate in Project Feeder Watch

Participate in Project Monarch Watch

Participate in West Virginia Winter Bird Count

Surveillance and Monitoring of the Eastern Hellbender on Four Ohio River Tributary Streams in West Virginia

West Virginia Northern Panhandle Herpetological Survey

West Virginia Odonate Survey

WISCONSIN

Henry Vilas Zoo

Butterfly Conservation Initiative

Comparative serum biochemical analysis fecal and ectoparasitic evaluation of free ranging *Basiliscus plumifrons* lizards in active cacao plantations. *Costa Rica*

Evaluation of species health in fragmented populations of Hoffmans' two-toed sloth

International Tapir Symposium. *Argentina, South America*

International Crane Foundation

Whooping Crane Recovery

Milwaukee County Zoological Gardens

Amphibian TAG support

Avian Scientific Advisory Group

AZA Contraception Center

Balickpapan Orangutan Society support

Bear TAG support

Berggorilla & Regenwald Direkthilfe support

Bonobo - collection and cryopreservation of semen

Bonobo and Congo Diversity Initiative

Carnivore Conservation project

Cheetah SSP

Chelonian TAG Support

Cinereous Vulture Satellite tracking in *Armenia and Georgia*

Declining Amphibian Task Force Support

Demographics of the Grenada Bank tree boa. *Grenada, West Indies*

Echocardiographic parameters in non-anesthetized bonobos using operant conditioning

El Valle Amphibian Conservation Center. *Panama*

Financial Support of the Conservation Breeding Specialist Group (CBSG)

Freshwater Fish TAG Support

Gestational ultrasound parameters in non-anesthetized bonobos using operant conditioning

Global and Regional Lead, Drug Inventory and Tracking Focus Group for ZIMS

Grand Cayman Iguana Conservation. *Grand Cayman*

Great Ape Survival Project support



researcher with eastern hellbender
© joe greathouse

2006 conservation projects

Great Lake Piping Plover Salvage Captive Rearing	Reestablishment of the ornate box turtle on a prairie remnant
Grenada Eleutherodactylus: Habitat use by sympatric species	Sex differences in testosterone concentration across primate taxa
Humboldt Penguin Ecology and Health Research Initiative in <i>Chile</i>	Snake TAG Support
International Snow Leopard Trust. <i>Asia</i>	Thailand Hornbill Project support. <i>Thailand</i>
IUCN Conservation Breeding Specialist Group	Tree Kangaroo Conservation Program in <i>Papua New Guinea</i>
IUCN/SSC Tapir Specialist Group	Tree kangaroo habitat assessment and conservation project. <i>Australia</i>
Jamaican Iguana Conservation. <i>Jamaica</i>	Tree Kangaroo SSP
Lake Victoria Cichlid SSP	Use of PZP (Porcine Zona Pellucida) immunocontraception in Dall sheep and pygmy goats
Lion Tamarins of Brazil Fund support. <i>Brazil</i>	Veterinary Advisor, Bonobo SSP
Madagascar Fauna Group. <i>Madagascar</i>	Veterinary subject matter expert for ZIMS
Madagascar Wildlife Conservation Fund Support. <i>Madagascar</i>	Whooping crane recovery
Marianas Island Conservation Support. <i>Commonwealth of N. Maryannas Islands</i>	Wisconsin Rattlesnake Hotline
Marine Fish TAG Support	Zoo Archives Photo database project
Migratory and Resident Avifauna Use of Milwaukee County Zoological Gardens	
Mountain bongo repatriation to Mount Kenya World Heritage Site. <i>Kenya</i>	
Ornate Box Turtle Headstart Program	
Partners in Amphibian and Reptile Conservation	
Pedigree reconstruction to sustain zoo populations	
Phoenix Fund support	
Piping plover conservation	
Piping plover recovery project	
Polar Bears International (PBI) <i>Russia, North America, Norway</i>	
Population census of Humboldt penguins in <i>Chile</i>	

Racine Zoological Gardens

Board of Directors, Zoo Conservation Outreach Group

Butterfly Conservation Initiative

Education programs

El Valle Amphibian Conservation Center. *Panama*

Ornate Box Turtle Headstart Program

Reestablishment of the ornate box turtle on a prairie remnant

Study of superficial necrolytic dermatitis (SND) in captive black rhinos.

Tropical Herpetology. *Costa Rica, Nicaragua*

Northeastern Wisconsin (NEW) Zoo

Black bear radio collar research project

Conservation grant programs

David Sheldrick Wildlife Trust

Iowa trumpeter swan restoration program

Mount Kenya Wildlife Conservancy. *Kenya*

NEW Zoo Ecotourism program

Suitcase for Survival

Wisconsin's Invasive Species Exhibit



tomato frog

Photo credits: All photos © Melissa Yuen unless otherwise specified



Owl monkey © Melissa Yuen

The Association of Zoos & Aquariums
is building North America's largest wildlife conservation
movement by engaging and inspiring our 143 million visitors and
their communities to care about and take action to help protect
wildlife.

www.aza.org